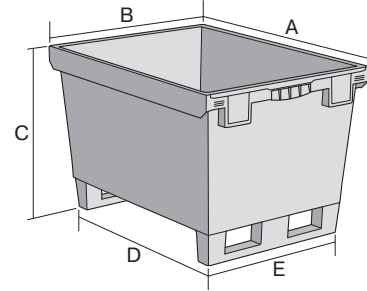
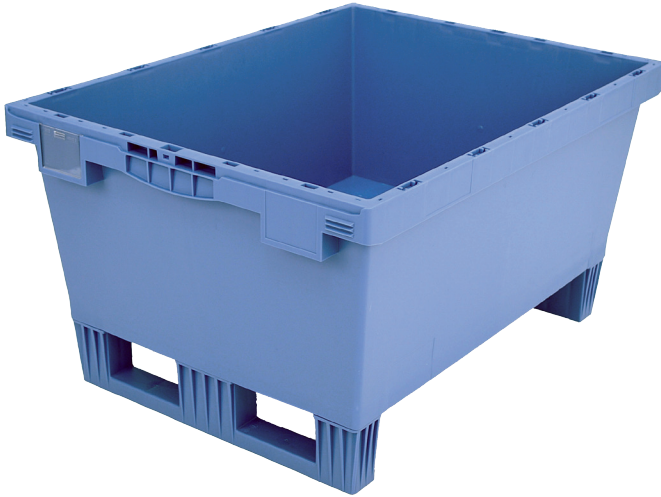


Multi-purpose containers MB with ribbed base, with ready-mounted runners

MB86321RKUFE | Data sheet



Pos. Dimensions, tolerances as specified in DIN 16901

Pos.	Dimensions, tolerances as specified in DIN 16901	
A	Outside length top	800 mm
B	Outside width top	600 mm
C	Height	323 mm
D	Base length outside	690 mm
E	Base width outside	508 mm

Product features	*Load capacity as specified in EN 13117
Weight	5.94 kg
*Load capacity	75 kg
Volume	114 litres
Warranty	5 year BITO QUALITY
ESD	ESD version upon request
Temperature range	-20°C to +90°C
Food safety	✓
Material	PP
Stock item	✓
Pcs/pack	1
colour	dove blue
Ref. no.	6-15310

Other colours / special colours on request

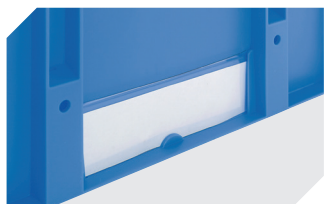
Dimensions, tolerances as specified in DIN 16901	
Outside length top	800 mm
Outside width top	600 mm
Height	323 mm
Inside length top	742 mm
Inside width top	560 mm
Inside length base	682 mm
Inside width base	500 mm
Inside height	302 mm

Information & Service
www.bito.com

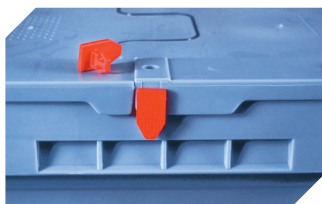
BITO
 LAGERTECHNIK

Multi-purpose containers MB with ribbed base, with ready-mounted runners

MB86321RKUFE | Accessories



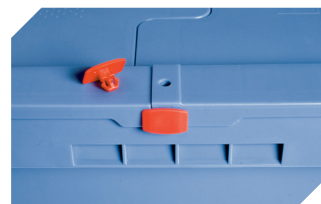
Label covers
for multi-purpose containers MB
W 60 x H 80.4 mm
6-15244



Security seals
MBP1 - suited for BITOBOX MB
6-10810



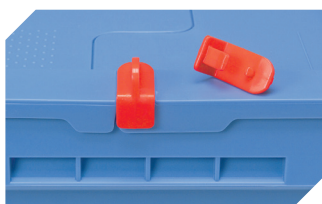
Transport dolly
for multi-purpose containers sized
800 x 400 mm and 800 x 600 mm
L 720 x W 540 mm
6-19439



Security seals
MBP2 - suited for BITOBOX MB
6-15705



Security seals
MBP2-L - suited for BITOBOX MB,
XL, SL
6-19162



Locking clips
suited for BITOBOX MB
6-20299



Drop-on lid
for multi-purpose containers MB
L 800 x W 600 mm
6-22546



Barcoded security seals
MBP3 - suited for BITOBOX MBs in all
sizes and XLs 800 x 600 mm
6-31550