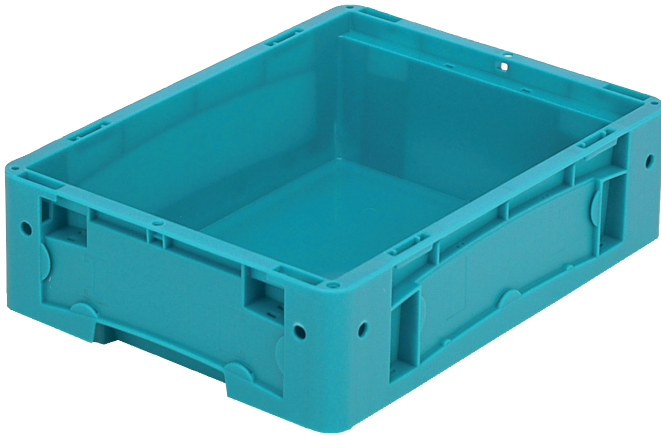


# Small parts containers KLT

## KLT43120 | Data sheet



Pos. Dimensions, Tolerances as specified in DIN 16901

Pos.	Dimensions, Tolerances as specified in DIN 16901	
A	Outside length top	400 mm
B	Outside width top	300 mm
C	Height	120 mm

Product features	*Load capacity as specified in EN 13117
Weight	0.99 kg
*Stacking load	300 kg
*Load capacity	25* kg
Volume	8.9 litres
Warranty	5 year BITO QUALITY
ESD	ESD version upon request
Temperature range	-20°C to +90°C
Food safety	✓
Material	PP
Stock item	✓
Pcs/pack	1
colour	turquoise
Ref. no.	9-18464

Other colours / special colours on request

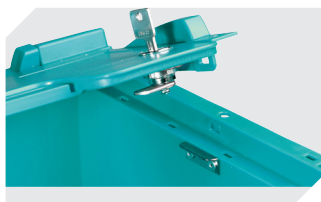
Dimensions, Tolerances as specified in DIN 16901	
Outside length top	400 mm
Outside width top	300 mm
Height	120 mm
Inside length top	341 mm
Inside width top	268 mm
Inside height	116 mm

Information & Service  
[www.bitocom](http://www.bitocom)

**BITO**  
 STORAGE  
 SYSTEMS

# Small parts containers KLT

## KLT43120 | Accessories



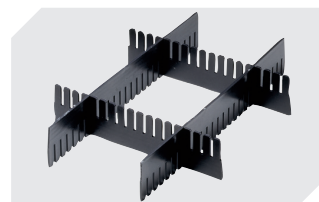
**Locking systems BS**  
for small parts containers KLT  
**7-14434**



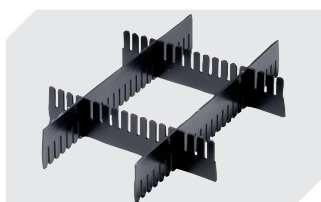
**Labels**  
W 210 x H 74 mm  
**43-14557**



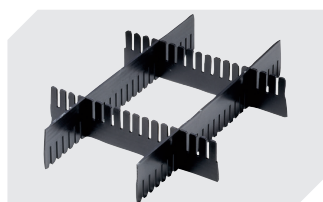
**Transport dolly**  
polypropylene wheels  
L 620 x W 420 mm  
**43-1491**



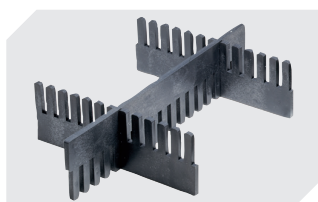
**Slot-in divider strips**  
Material thickness 5 mm  
L 1150 x H 180 mm  
**7-15509**



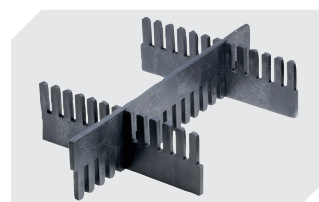
**Slot-in divider strips**  
Material thickness 5 mm  
L 1150 x H 50 mm  
**43-18417**



**Slot-in divider strips**  
Material thickness 5 mm  
L 1150 x H 80 mm  
**43-18418**



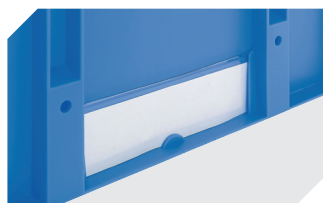
**Slot-in divider strips**  
Material thickness 10 mm  
L 950 x H 55 mm  
**43-18419**



**Slot-in divider strips**  
Material thickness 10 mm  
L 950 x H 120 mm  
**43-18420**



**Covers for palletised containers**  
L 1220 x W 820 mm  
**9-18421**



**Label covers**  
for European size stacking containers  
XL and small parts containers KLT  
W 209 x H 67 mm  
**9-20053**



**Drop-on lids**  
for small parts containers KLT  
L 400 x W 300 mm  
**43-20499**



**Drop-on lids**  
hinge-clipped on one side  
KLT container with hinged lid  
L 400 x W 300 mm  
**43-21520**



**Transport dolly**  
rubber wheels  
L 620 x W 420 mm  
**43-21883**



**Document pockets**  
self-adhesive  
3 sides open  
L 175 x W 105 mm  
**6-5031**

Information & Service  
**www.bitto.com**

**BITO**  
STORAGE  
SYSTEMS