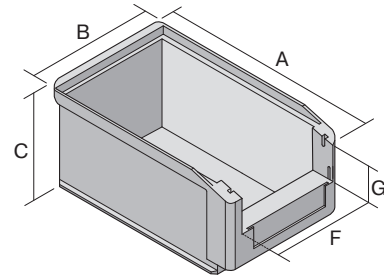


## Storage bins SK

# SK3522 | Data sheet



Pos. Dimensions, tolerances as specified in DIN 16901

Pos.	Dimensions, tolerances as specified in DIN 16901	
A	Outside length top	350 mm
B	Outside width top	210 mm
C	Height	200 mm
F	Width of view and pick opening	158 mm
G	Height of view and pick opening	85 mm

### Product features

Weight	0.79 kg
*Stacking load	90 kg
*Load capacity	20 kg
Volume	10 litres
Warranty	5 year BITO QUALITY
ESD	ESD version upon request
Temperature range	-20°C to +80°C
Food safety	✓
Material	PP
Stock item	-
Pcs/pallet	210
Pcs/pack	10
colour	red
Ref. no.	2-1460

Other colours / special colours on request

All written or verbal information about product properties and product application are given to the best of our knowledge. This information is based on our experience and cannot be warranted as the sole binding product properties. It is the customer's responsibility to check whether the ordered goods are suitable for the intended use. All measurements are subject to variations within the scope of the applicable manufacturing tolerances.

\* Load capacity data according to EN 13117 refer to an ambient temperature of 23 °C.

### Dimensions, tolerances as specified in DIN 16901

Outside length top	350 mm
Outside width top	210 mm
Height	200 mm
Inside length top	299 mm
Inside width top	186 mm
Inside length base	296 mm
Inside width base	184 mm
Inside height	188 mm
Stacking height	193 mm
Height below handle	60 mm
Pick opening W x H	158 x 85 mm
Label dimensions L x W	98 x 36 mm

### Printed message

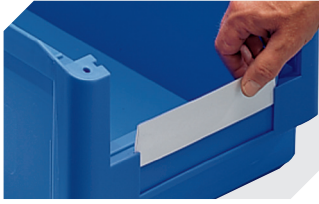
Pad printing area on short side (front)	160 x 30 mm
Pad printing area on short side (rear)	140 x 100 mm
Pad printing area on long side	250 x 40 mm
Screen printing area on short side (rear)	130 x 110 mm
Hot foil printing area on short side (rear)	160 x 100 mm
Hot foil printing area on long side	250 x 40 mm
Injection mold printing area on long side	215 x 40 mm

Information & Service  
[www.bito.com](http://www.bito.com)

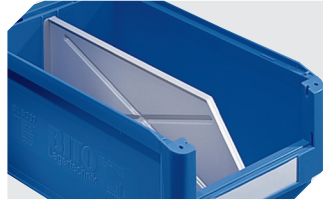
**BITO**  
 STORAGE  
 SYSTEMS

## Storage bins SK

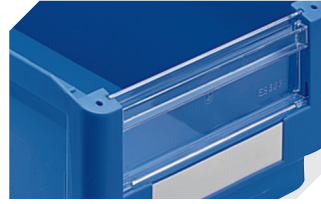
# SK3522 | Accessories



**Label covers**  
for storage bins SK  
L 98 x W 39 mm  
**2-1063**



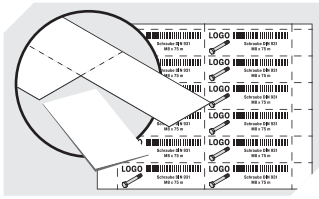
**Longitudinal dividers**  
for storage bins SK  
**2-1074**



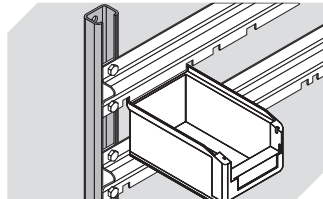
**Insertable windows**  
for storage bins SK  
**2-1111**



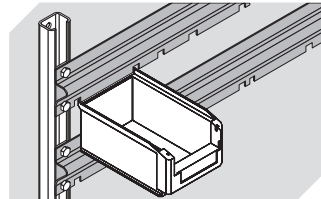
**Dust covers**  
for storage bins SK  
L 330 x W 203 x H 2 mm  
**2-1134**



**Label sheets**  
W 98 x H 36 mm  
**46-20775**



**Louvred panel uprights**  
L 1000 x W 35 x H 25 mm  
**8-5928**



**Bin suspension rails**  
L 1126 mm  
**8-7869**