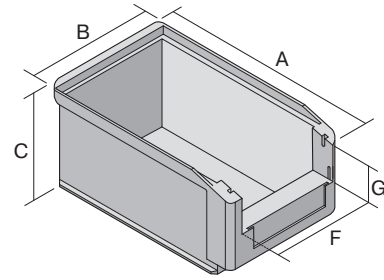


Storage bins SK

SK3521 | Data sheet



Pos. Dimensions, tolerances as specified in DIN 16901

Pos.	Dimensions, tolerances as specified in DIN 16901	
A	Outside length top	350 mm
B	Outside width top	210 mm
C	Height	145 mm
F	Width of view and pick opening	163 mm
G	Height of view and pick opening	65 mm

Product features	*Load capacity as specified in EN 13117
Weight	0.59 kg
*Stacking load	90 kg
*Load capacity	15 kg
Volume	7.5 litres
Warranty	5 year BITO QUALITY
ESD	ESD version upon request
Temperature range	-20°C to +80°C
Food safety	✓
Material	PP

Other colours / special colours on request

Dimensions, tolerances as specified in DIN 16901	
Outside length top	350 mm
Outside width top	210 mm
Height	145 mm
Inside length top	299 mm
Inside width top	186 mm
Inside length base	296 mm
Inside width base	184 mm
Inside height	134 mm
Stacking height	138 mm
Height below handle	27 mm
Pick opening W x H	163 x 65 mm
Label dimensions L x W	98 x 36 mm

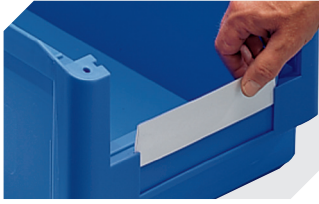
Printed message	
Pad printing area on short side (front)	60 x 20 mm
Pad printing area on short side (rear)	100 x 90 mm
Pad printing area on long side	250 x 30 mm
Screen printing area on short side (rear)	130 x 60 mm
Hot foil printing area on short side (rear)	160 x 90 mm
Hot foil printing area on long side	250 x 20 mm
Injection mold printing area on long side	215 x 40 mm

Information & Service
www.bito.com

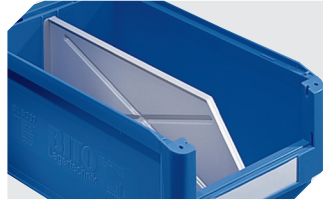
BITO
 STORAGE
 SYSTEMS

Storage bins SK

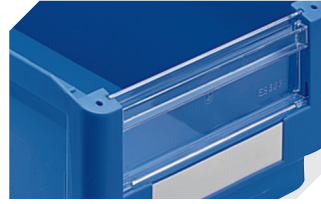
SK3521 | Accessories



Label covers
for storage bins SK
L 98 x W 39 mm
2-1063



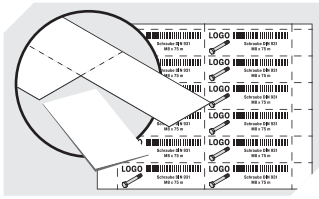
Longitudinal dividers
for storage bins SK
2-1074



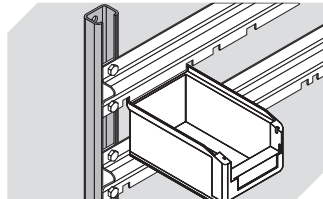
Insertable windows
for storage bins SK
2-1110



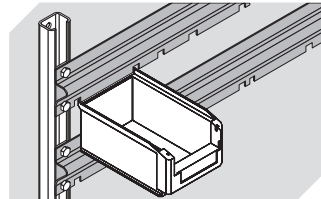
Dust covers
for storage bins SK
L 330 x W 203 x H 2 mm
2-1134



Label sheets
W 98 x H 36 mm
46-20775



Louvred panel uprights
L 1000 x W 35 x H 25 mm
8-5928



Bin suspension rails
L 1126 mm
8-7869