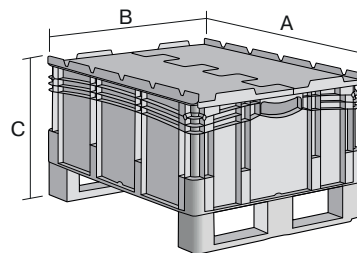


# European size stacking containers XL, with solid sides, hinged two-part lid and runners XLD86321DKUFE | Data sheet



Pos. Dimensions, tolerances as specified in DIN 16901

| Pos. | Dimensions, tolerances as specified in DIN 16901 |        |
|------|--|--------|
| A    | Outside length top                               | 800 mm |
| B    | Outside width top                                | 600 mm |
| C    | Height   | 438 mm |

## Product features

|                   |                     |
|-------------------|---------------------|
| Weight            | 10.68 kg            |
| *Stacking load    | 800 kg              |
| *Load capacity    | 200 kg              |
| Volume            | 121 litres          |
| Warranty          | 5 year BITO QUALITY |
| ESD               | No                  |
| Temperature range | -20°C to +80°C      |
| Food safety       | ✓                   |
| Material          | PP                  |
| Stock item        | ✓                   |
| Pcs/pack          | 1                   |
| colour            | blue                |
| Ref. no.          | 43-20268            |

Other colours / special colours on request

All written or verbal information about product properties and product application are given to the best of our knowledge. This information is based on our experience and cannot be warranted as the sole binding product properties. It is the customer's responsibility to check whether the ordered goods are suitable for the intended use. All measurements are subject to variations within the scope of the applicable manufacturing tolerances.

\* Load capacity data according to EN 13117 refer to an ambient temperature of 23 °C.

## Dimensions, tolerances as specified in DIN 16901

|                    |        |
|--------------------|--------|
| Outside length top | 800 mm |
| Outside width top  | 600 mm |
| Height             | 438 mm |
| Inside length top  | 762 mm |
| Inside width top   | 562 mm |
| Inside height      | 301 mm |

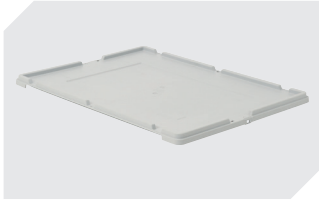
## Printed message

|   |              |
|---|--------------|
| Pad printing area on short side (front)     | 100 x 180 mm |
| Pad printing area on short side (rear)      | 100 x 180 mm |
| Pad printing area on long side              | 100 x 180 mm |
| Hot foil printing area on short side (rear) | 100 x 180 mm |
| Hot foil printing area on long side         | 100 x 180 mm |
| Injection mold printing area on long side   | 25 x 100 mm  |

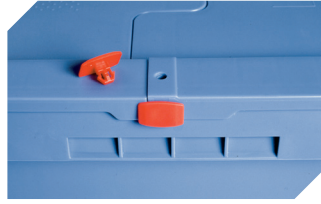
Information & Service  
[www.bito.com](http://www.bito.com)

**BITO**  
LAGERTECHNIK

# European size stacking containers XL, with solid sides, hinged two-part lid and runners **XLD86321DKUFE** | Accessories



**Drop-on lid**  
for European size stacking containers  
XL  
L 800 x W 600 mm  
**43-14853**



**Security seals**  
MBP2 - suited for BITOBOX MB  
**6-15705**



**Covers for palletised loads**  
L 1220 x W 820 mm  
**9-18421**



**Add-on fork entry shoes**  
for European size stacking containers  
XL  
**43-20273**