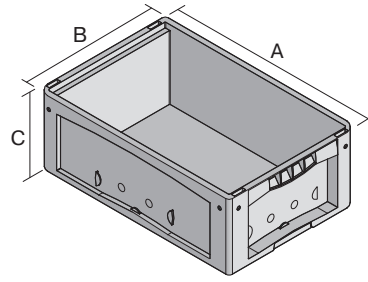
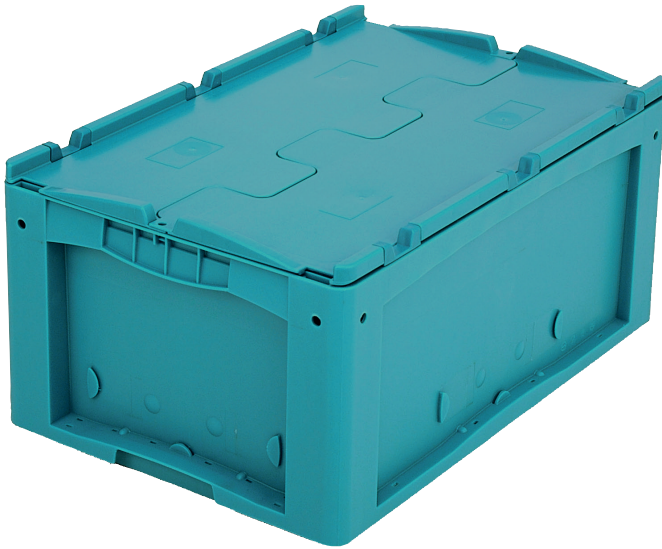


# Small parts containers KLT, with hinged two-part lid

## KLTD64270 | Data sheet



Pos. Dimensions, Tolerances as specified in DIN 16901

|   |                    |        |
|---|--------------------|--------|
| A | Outside length top | 600 mm |
| B | Outside width top  | 400 mm |
| C | Height             | 288 mm |

| Product features  | *Load capacity as specified in EN 13117 |
|-------------------|---|
| Weight            | 3.65 kg                                 |
| *Stacking load    | 500 kg                                  |
| *Load capacity    | 50 kg                                   |
| Volume            | 48 litres                               |
| Warranty          | 5 year BITO QUALITY                     |
| ESD               | ESD version upon request                |
| Temperature range | -20°C to +90°C                          |
| Food safety       | ✓                                       |
| Material          | PP                                      |
| Stock item        | ✓                                       |
| Pcs/pack          | 1                                       |
| colour            | turquoise                               |
| Ref. no.          | 9-16811                                 |

Other colours / special colours on request

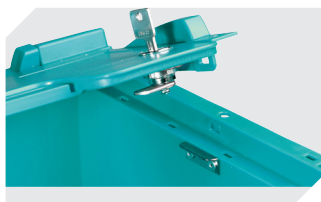
| Dimensions, Tolerances as specified in DIN 16901 |        |
|--|--------|
| Outside length top                               | 600 mm |
| Outside width top                                | 400 mm |
| Height   | 288 mm |
| Inside length top                                | 541 mm |
| Inside width top                                 | 368 mm |
| Inside height                                    | 266 mm |

Information & Service  
[www.bitocom](http://www.bitocom)

**BITO**  
 STORAGE  
 SYSTEMS

## Small parts containers KLT, with hinged two-part lid

# KLTD64270 | Accessories



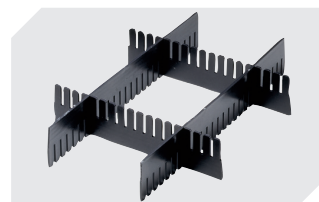
**Locking systems BS**  
for small parts containers KLT  
**7-14434**



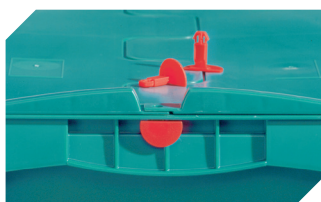
**Labels**  
W 210 x H 74 mm  
**43-14557**



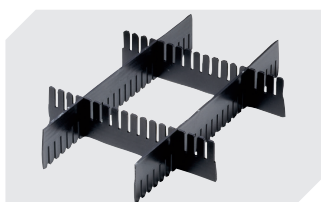
**Transport dolly**  
polypropylene wheels  
L 620 x W 420 mm  
**43-1491**



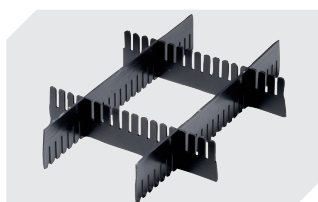
**Slot-in divider strips**  
Material thickness 5 mm  
L 1150 x H 180 mm  
**7-15509**



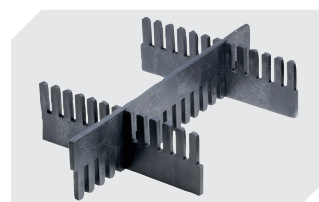
**Security seals**  
for European size stacking containers  
XL and small parts containers KLT  
**9-16271**



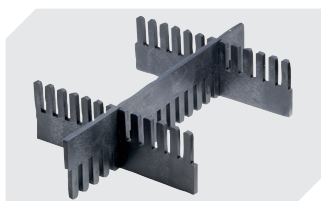
**Slot-in divider strips**  
Material thickness 5 mm  
L 1150 x H 50 mm  
**43-18417**



**Slot-in divider strips**  
Material thickness 5 mm  
L 1150 x H 80 mm  
**43-18418**



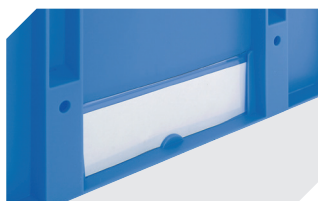
**Slot-in divider strips**  
Material thickness 10 mm  
L 950 x H 55 mm  
**43-18419**



**Slot-in divider strips**  
Material thickness 10 mm  
L 950 x H 120 mm  
**43-18420**



**Covers for palletised containers**  
L 1220 x W 820 mm  
**9-18421**



**Label covers**  
for European size stacking containers  
XL and small parts containers KLT  
W 209 x H 67 mm  
**9-20053**



**Label covers**  
for small parts containers KLT  
firm fit  
W 218 x H 80 mm  
**9-20054**



**Transport dolly**  
rubber wheels  
L 620 x W 420 mm  
**43-21883**



**Document pockets**  
self-adhesive  
3 sides open  
L 175 x W 105 mm  
**6-5031**