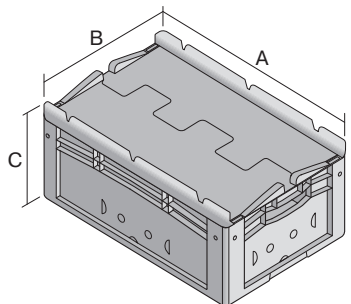


European size stacking containers XL with double base, with hinged two-part lid
XLD86521D | Data sheet



Pos.	Dimensions, tolerances as specified in DIN 16901	
A	Outside length top	800 mm
B	Outside width top	600 mm
C	Height	538 mm

Product features	
Weight	10.77 kg
*Stacking load	800 kg
*Load capacity	200 kg
Volume	206 litres
Warranty	5 year BITO QUALITY
ESD	No
Temperature range	-20°C to +60°C
Food safety	–
Material	PP
Stock item	✓
Pcs/pack	1
colour	bins in blue - base in black
Ref. no.	43-22581

Other colours / special colours on request
All written or verbal information about product properties and product application are given to the best of our knowledge. This information is based on our experience and cannot be warranted as the sole binding product properties. It is the customer's responsibility to check whether the ordered goods are suitable for the intended use. All measurements are subject to variations within the scope of the applicable manufacturing tolerances.

* Load capacity data according to EN 13117 refer to an ambient temperature of 23 °C.

Dimensions, tolerances as specified in DIN 16901	
Outside length top	800 mm
Outside width top	600 mm
Height	538 mm
Inside length top	762 mm
Inside width top	562 mm
Inside height	501 mm

Printed message	
Pad printing area on short side (front)	100 x 180 mm
Pad printing area on short side (rear)	100 x 180 mm
Pad printing area on long side	100 x 180 mm
Hot foil printing area on short side (front)	100 x 180 mm
Hot foil printing area on short side (rear)	100 x 180 mm
Hot foil printing area on long side	100 x 180 mm
Injection mold printing area on long side	25 x 100 mm

Information & Service
www.bito.com

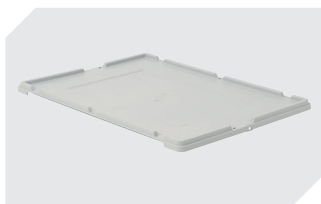


European size stacking containers XL with double base, with hinged two-part lid

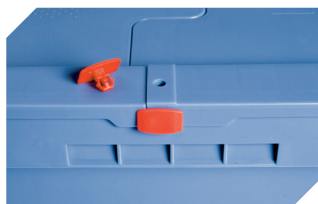
XLD86521D | Accessories



Transport dollies
for containers sized 800 x 600 mm
L 800 x W 600 x H 198 mm
43-1150



Drop-on lid
for European size stacking containers XL
L 800 x W 600 mm
43-14853



Security seals
MBP2 - suited for BITOBOX MB
6-15705



Covers for palletised loads
L 1220 x W 820 mm
9-18421