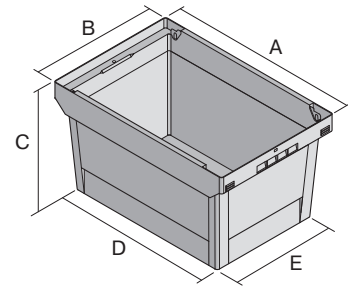


# Multi-purpose containers MB, with long side pick opening

## MB64276 | Data sheet



Pos. Dimensions, tolerances as specified in DIN 16901

Pos.	Dimensions, tolerances as specified in DIN 16901	
A	Outside length top	600 mm
B	Outside width top	400 mm
C	Height	273 mm
D	Base length outside	505 mm
E	Base width outside	335 mm
F	Width of view and pick opening	139 mm
G	Height of view and pick opening	439 mm

Product features	*Load capacity as specified in EN 13117
Weight	2.06 kg
*Load capacity	30 kg
Volume	47 litres
ESD	No
Food safety	-
Material	PP
Stock item	✓
Pcs/pallet	104
Pcs/pack	1
colour	dove blue
Ref. no.	6-11082

Other colours / special colours on request

Dimensions, tolerances as specified in DIN 16901	
Outside length top	600 mm
Outside width top	400 mm
Height	273 mm
Inside length top	540 mm
Inside width top	371 mm
Inside length base	498 mm
Inside width base	329 mm
Height of stacking rim	65 mm
Pick opening W x H	139 x 439 mm

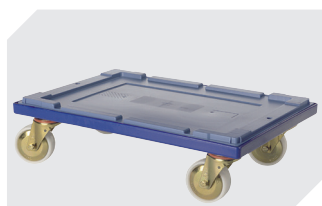
#### Printed message

Pad printing area on short side (front)	240 x 100 mm
Pad printing area on short side (rear)	240 x 100 mm
Pad printing area on long side	250 x 100 mm
Screen printing area on short side	210 x 80 mm
Screen printing area on short side (rear)	210 x 80 mm
Screen printing area on long side	380 x 80 mm
Hot foil printing area on short side (front)	240 x 100 mm
Hot foil printing area on short side (rear)	240 x 100 mm
Hot foil printing area on long side	250 x 100 mm
Injection mold printing area on long side	235 x 35 mm

Information & Service  
[www.bitto.com](http://www.bitto.com)

**BITO**  
 STORAGE  
 SYSTEMS

## Multi-purpose containers MB, with long side pick opening **MB64276** | Accessories



### **Transport dollies**

for multi-purpose containers sized

600 x 400 mm

L 620 x W 420 mm

**6-15510**

Information & Service  
[www.bitto.com](http://www.bitto.com)

**BITO**  
S T O R A G E  
S Y S T E M S