

# Multi-purpose containers MB with double base

## MB64421D | Data sheet



Pos. Dimensions, tolerances as specified in DIN 16901

Pos.	Dimensions, tolerances as specified in DIN 16901	
A	Outside length top	600 mm
B	Outside width top	400 mm
C	Height	442 mm
D	Base length outside	505 mm
E	Base width outside	335 mm

### Product features

Weight	3.96 kg
*Load capacity	75 kg
Volume	74 litres
Warranty	5 year BITO QUALITY
ESD	No
Temperature range	-20°C to +60°C
Food safety	✓
Material	PP
Stock item	✓
Pcs/pallet	64
Pcs/pack	1
colour	bin colour dove blue - base in black
Ref. no.	6-17607

Other colours / special colours on request

All written or verbal information about product properties and product application are given to the best of our knowledge. This information is based on our experience and cannot be warranted as the sole binding product properties. It is the customer's responsibility to check whether the ordered goods are suitable for the intended use. All measurements are subject to variations within the scope of the applicable manufacturing tolerances.

\* Load capacity data according to EN 13117 refer to an ambient temperature of 23 °C.

### Dimensions, tolerances as specified in DIN 16901

Outside length top	600 mm
Outside width top	400 mm
Height	442 mm
Inside length top	540 mm
Inside width top	371 mm
Inside length base	498 mm
Inside width base	329 mm
Inside height	415 mm
Height of stacking rim	100 mm

### Printed message

Pad printing area on short side (front)	240 x 100 mm
Pad printing area on short side (rear)	240 x 100 mm
Pad printing area on long side	250 x 100 mm
Screen printing area on short side	210 x 180 mm
Screen printing area on short side (rear)	210 x 180 mm
Screen printing area on long side	380 x 160 mm
Hot foil printing area on short side (front)	240 x 100 mm
Hot foil printing area on short side (rear)	240 x 100 mm
Hot foil printing area on long side	250 x 100 mm
Injection mold printing area on long side	235 x 70 mm

Information & Service  
[www.bitto.com](http://www.bitto.com)

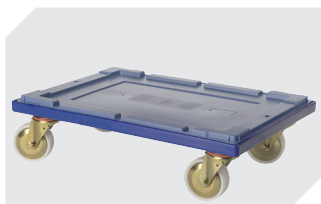
**BITO**  
 STORAGE  
 SYSTEMS

# Multi-purpose containers MB with double base

## MB64421D | Accessories



**Drop-on lid**  
for multi-purpose containers MB  
L 600 x W 400 mm  
**6-30276**



**Transport dollies**  
for multi-purpose containers sized  
600 x 400 mm  
L 620 x W 420 mm  
**6-15510**



**Connector clips**  
**6-15625**



**Document pockets**  
self-adhesive  
2 sides open  
L 145 x W 100 mm  
**46-21108**



**Document pockets**  
self-adhesive  
3 sides open  
L 175 x W 105 mm  
**6-5031**