

# Small parts containers KLT

## KLT64170 | Data sheet



Pos. Dimensions, tolerances as specified in DIN 16901

Pos.	Dimensions, tolerances as specified in DIN 16901	
A	Outside length top	600 mm
B	Outside width top	400 mm
C	Height	170 mm

### Product features

Weight	2.05 kg
*Stacking load	500 kg
*Load capacity	30 kg
Volume	29 litres
Warranty	5 year BITO QUALITY
ESD	ESD version upon request
Temperature range	-20°C to +80°C
Food safety	✓
Material	PP
Stock item	✓
Pcs/pack	1
colour	turquoise
Ref. no.	9-16805

Other colours / special colours on request

All written or verbal information about product properties and product application are given to the best of our knowledge. This information is based on our experience and cannot be warranted as the sole binding product properties. It is the customer's responsibility to check whether the ordered goods are suitable for the intended use. All measurements are subject to variations within the scope of the applicable manufacturing tolerances.

\* Load capacity data according to EN 13117 refer to an ambient temperature of 23 °C.

### Dimensions, tolerances as specified in DIN 16901

Outside length top	600 mm
Outside width top	400 mm
Height	170 mm
Inside length top	541 mm
Inside width top	368 mm
Inside height	166 mm

Information & Service  
[www.bito.com](http://www.bito.com)

**BITO**  
 STORAGE  
 SYSTEMS

# Small parts containers KLT

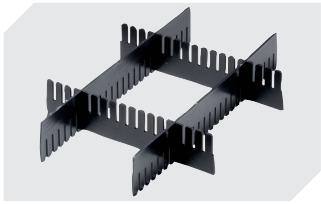
## KLT64170 | Accessories



**Sides with bag holder notches**  
demountable  
**6-31553**



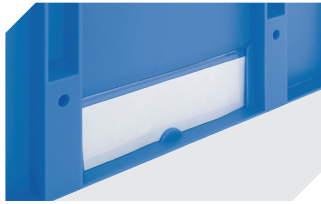
**Labels**  
suited for BITOBOX XL and KLT with a  
height of at least 170 mm  
W 210 x H 74 mm  
**43-14557**



**Slot-in divider strips**  
Material thickness 5 mm  
L 1150 x H 50 mm  
**43-18417**



**Covers for palletised loads**  
L 1220 x W 820 mm  
**9-18421**



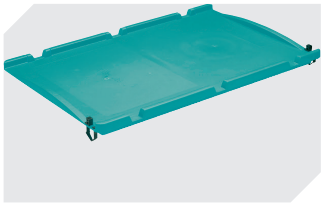
**Label covers**  
for European size stacking containers  
XL and small parts containers KLT  
W 209 x H 67 mm  
**9-20053**



**Label covers**  
for small parts containers KLT  
for European size stacking containers XL  
firm fit  
W 218 x H 80 mm  
**9-20054**



**Drop-on lids**  
for small parts containers KLT  
L 600 x W 400 mm  
**43-20497**



**Drop-on lids**  
can be hinge-clipped on one side  
to small parts containers KLT and  
European size stacking containers XL  
L 600 x W 400 mm  
**43-21523**



**Transport dollies**  
rubber wheels  
L 620 x W 420 mm  
**43-21883**



**Document pockets**  
self-adhesive  
3 sides open  
L 175 x W 105 mm  
**6-5031**