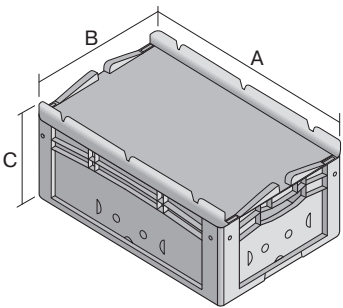
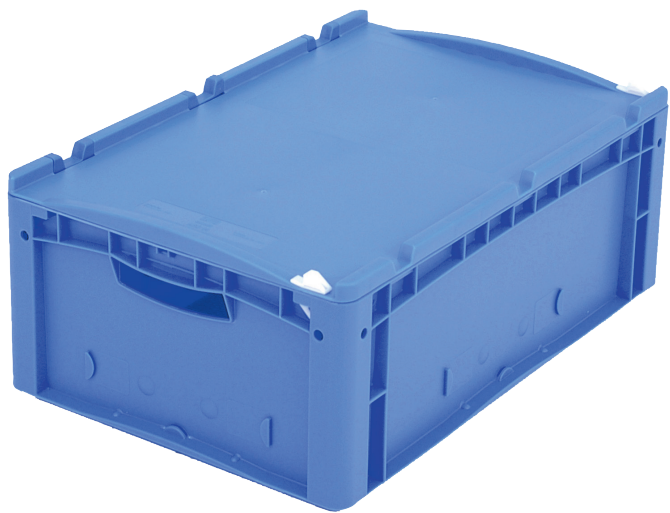


European size stacking containers XL, hinged on one side and closed with 2 snap locks on the other side

XL64221ASDV | Data sheet



Pos. Dimensions, tolerances as specified in DIN 16901

| | | |
|---|--------------------|--------|
| A | Outside length top | 600 mm |
| B | Outside width top | 400 mm |
| C | Height | 238 mm |

Product features

| | |
|-------------------|--------------------------|
| Weight | 2.91 kg |
| *Stacking load | 300 kg |
| *Load capacity | 15 kg |
| Volume | 41 litres |
| Warranty | 5 year BITO QUALITY |
| ESD | ESD version upon request |
| Temperature range | -20°C to +80°C |
| Food safety | ✓ |
| Material | PP |
| Stock item | ✓ |
| Pcs/pack | 1 |
| colour | blue |
| Ref. no. | 43-22254 |

Other colours / special colours on request
All written or verbal information about product properties and product application are given to the best of our knowledge. This information is based on our experience and cannot be warranted as the sole binding product properties. It is the customer's responsibility to check whether the ordered goods are suitable for the intended use. All measurements are subject to variations within the scope of the applicable manufacturing tolerances.

* Load capacity data according to EN 13117 refer to an ambient temperature of 23 °C.

Dimensions, tolerances as specified in DIN 16901

| | |
|--------------------|--------|
| Outside length top | 600 mm |
| Outside width top | 400 mm |
| Height | 238 mm |
| Inside length top | 568 mm |
| Inside width top | 368 mm |
| Inside length base | 559 mm |
| Inside width base | 359 mm |
| Inside height | 216 mm |

Printed message

| | |
|--|-------------|
| Pad printing area on short side (front) | 40 x 250 mm |
| Pad printing area on short side (rear) | 40 x 250 mm |
| Pad printing area on long side | 40 x 250 mm |
| Hot foil printing area on short side (front) | 40 x 250 mm |
| Hot foil printing area on short side (rear) | 40 x 250 mm |
| Hot foil printing area on long side | 40 x 250 mm |
| Injection mold printing area on long side | 25 x 180 mm |

Information & Service
www.bito.com

BITO
STORAGE
SYSTEMS

European size stacking containers XL, hinged on one side and closed with 2 snap locks on the other side

XL64221ASDV | Accessories



Covers for palletised loads

L 1220 x W 820 mm

9-18421



Transport dollies

rubber wheels

L 620 x W 420 mm

43-21883



Grip closures

for European size stacking containers XL
with a height of 170, 220 and 270 mm

43-31450