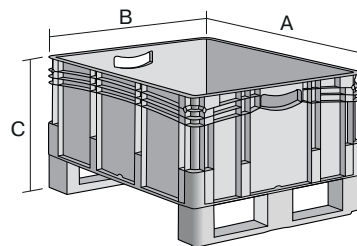


European size stacking containers XL, with ready-mounted runners and closed sides XL86221DKUFE | Data sheet



Pos. Dimensions, tolerances as specified in DIN 16901

Pos.	Dimensions, tolerances as specified in DIN 16901	
A	Outside length top	800 mm
B	Outside width top	600 mm
C	Height	320 mm

Product features

Weight	7.03 kg
*Stacking load	800 kg
*Load capacity	200 kg
Volume	79 litres
Warranty	5 year BITO QUALITY
ESD	No
Temperature range	-20°C to +80°C
Food safety	✓
Material	PP
Stock item	✓
Pcs/pack	1
colour	blue
Ref. no.	43-22605

Other colours / special colours on request

All written or verbal information about product properties and product application are given to the best of our knowledge. This information is based on our experience and cannot be warranted as the sole binding product properties. It is the customer's responsibility to check whether the ordered goods are suitable for the intended use. All measurements are subject to variations within the scope of the applicable manufacturing tolerances.

* Load capacity data according to EN 13117 refer to an ambient temperature of 23 °C.

Dimensions, tolerances as specified in DIN 16901

Outside length top	800 mm
Outside width top	600 mm
Height	320 mm
Inside length top	762 mm
Inside width top	562 mm
Inside height	201 mm

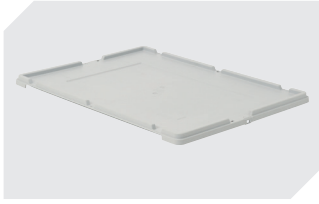
Printed message

Pad printing area on short side (front)	40 x 180 mm
Pad printing area on short side (rear)	40 x 180 mm
Pad printing area on long side	70 x 180 mm
Hot foil printing area on short side (rear)	40 x 180 mm
Hot foil printing area on long side	70 x 180 mm
Injection mold printing area on long side	25 x 100 mm

Information & Service
www.bitocom

BITO
LAGERTECHNIK

European size stacking containers XL, with ready-mounted runners and closed sides **XL86221DKUFE** | Accessories



Drop-on lid
for European size stacking containers
XL
L 800 x W 600 mm
43-14853



Covers for palletised loads
L 1220 x W 820 mm
9-18421



Add-on fork entry shoes
for European size stacking containers
XL
43-20273