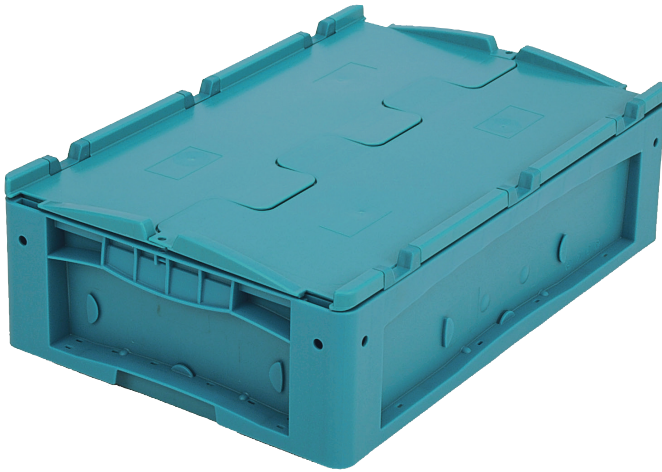


Small parts containers KLT with ribbed base, with hinged two-part lid  
**KLTD64170R** | Data sheet



Pos.	Dimensions, Tolerances as specified in DIN 16901	
A	Outside length top	600 mm
B	Outside width top	400 mm
C	Height	188 mm

Product features		*Load capacity as specified in EN 13117	Dimensions, Tolerances as specified in DIN 16901	
Weight		3.58 kg	Outside length top	600 mm
*Stacking load		500 kg	Outside width top	400 mm
*Load capacity		50 kg	Height	188 mm
Volume		26 litres	Inside length top	541 mm
Warranty		5 year BITO QUALITY	Inside width top	368 mm
ESD		ESD version upon request	Inside height	150 mm
Temperature range		-20°C to +90°C		
Food safety		✓		
Material		PP		
Stock item		✓		
Pcs/pack		1		
colour		turquoise		
Ref. no.		9-16808		

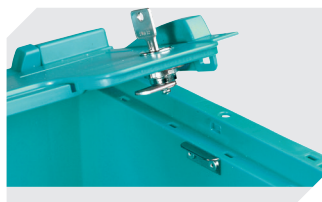
Other colours / special colours on request

Information & Service  
[www.bito.com](http://www.bito.com)



# Small parts containers KLT with ribbed base, with hinged two-part lid

## KLTD64170R | Accessories



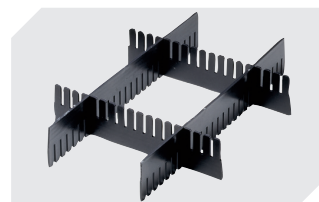
**Locking systems BS**  
for small parts containers KLT  
**7-14434**



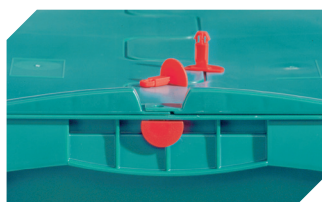
**Labels**  
W 210 x H 74 mm  
**43-14557**



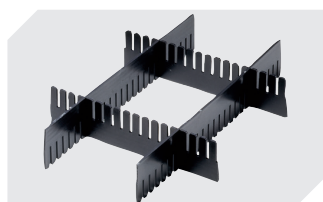
**Transport dolly**  
polypropylene wheels  
L 620 x W 420 mm  
**43-1491**



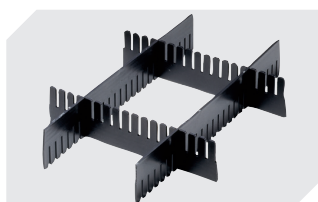
**Slot-in divider strips**  
Material thickness 5 mm  
L 1150 x H 180 mm  
**7-15509**



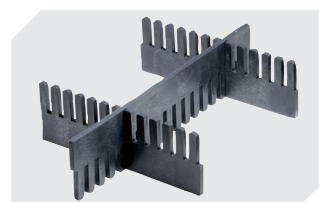
**Security seals**  
for European size stacking containers  
XL and small parts containers KLT  
**9-16271**



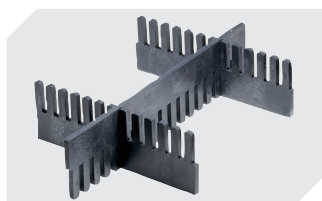
**Slot-in divider strips**  
Material thickness 5 mm  
L 1150 x H 50 mm  
**43-18417**



**Slot-in divider strips**  
Material thickness 5 mm  
L 1150 x H 80 mm  
**43-18418**



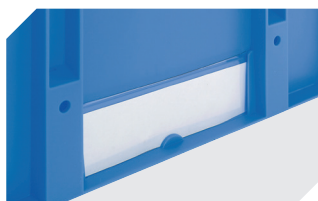
**Slot-in divider strips**  
Material thickness 10 mm  
L 950 x H 55 mm  
**43-18419**



**Slot-in divider strips**  
Material thickness 10 mm  
L 950 x H 120 mm  
**43-18420**



**Covers for palletised containers**  
L 1220 x W 820 mm  
**9-18421**



**Label covers**  
for European size stacking containers  
XL and small parts containers KLT  
W 209 x H 67 mm  
**9-20053**



**Label covers**  
for small parts containers KLT  
firm fit  
W 218 x H 80 mm  
**9-20054**



**Transport dolly**  
rubber wheels  
L 620 x W 420 mm  
**43-21883**



**Document pockets**  
self-adhesive  
3 sides open  
L 175 x W 105 mm  
**6-5031**

Information & Service  
**www.bitto.com**

**BITO**  
STORAGE  
SYSTEMS