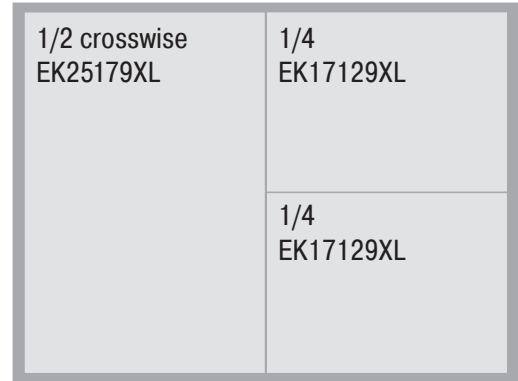


Insert bins, type EK, for European size stacking containers XL

EK25179XL | Data sheet



Pos. Dimensions, tolerances as specified in DIN 16901

Pos.	Dimensions, tolerances as specified in DIN 16901	
A	Outside length top	258 mm
B	Outside width top	178 mm
C	Height	90 mm

Product features

Weight	0.22 kg
*Stacking load	14 kg
*Load capacity	3.5 kg
Volume	3.5 litres
ESD	ESD version upon request
Food safety	-
Material	recycled polypropylene
Stock item	✓
Pcs/pack	16
colour	black
Ref. no.	43-20005

Other colours / special colours on request

All written or verbal information about product properties and product application are given to the best of our knowledge. This information is based on our experience and cannot be warranted as the sole binding product properties. It is the customer's responsibility to check whether the ordered goods are suitable for the intended use. All measurements are subject to variations within the scope of the applicable manufacturing tolerances.

* Load capacity data according to EN 13117 refer to an ambient temperature of 23 °C.

Dimensions, tolerances as specified in DIN 16901

Outside length top	258 mm
Outside width top	178 mm
Height	90 mm

Information & Service
www.bito.com

BITO
 STORAGE
 SYSTEMS

Insert bins, type EK, for European size stacking containers XL

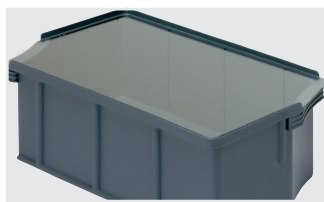
EK25179XL | Accessories



Cross dividers

for insertable bins EK
W 170.2 x H 80.5 x D 13 mm

9-16502



Dust covers

for insertable bins EK
L 253 x W 173 x H 2 mm

43-16880

Information & Service
www.bito.com

BITO
S T O R A G E
S Y S T E M S