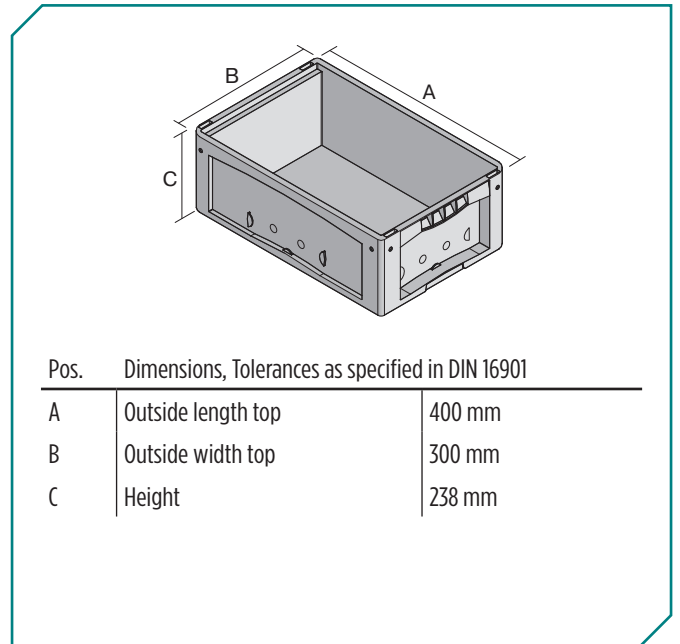


Small parts containers KLT with double base, with hinged two-part lid  
**KLTD43220D** | Data sheet



Product features	*Load capacity as specified in EN 13117
Weight	2.19 kg
*Stacking load	300 kg
*Load capacity	75 kg
Volume	16 litres
Warranty	5 year BITO QUALITY
ESD	ESD version upon request
Temperature range	-20°C to +60°C
Food safety	✓
Material	PP
Stock item	✓
Pcs/pack	1
colour	turquoise
Ref. no.	9-17505

Other colours / special colours on request

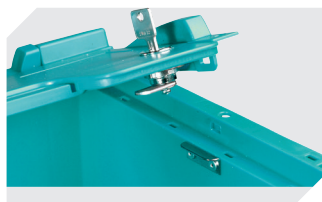
Dimensions, Tolerances as specified in DIN 16901	
Outside length top	400 mm
Outside width top	300 mm
Height	238 mm
Inside length top	341 mm
Inside width top	268 mm
Inside height	200 mm

Information & Service  
[www.bito.com](http://www.bito.com)

**BITO**  
 STORAGE  
 SYSTEMS

# Small parts containers KLT with double base, with hinged two-part lid

## KLTD43220D | Accessories



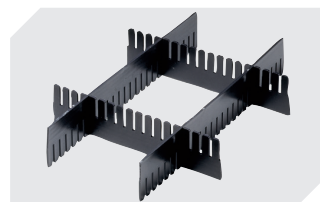
**Locking systems BS**  
for small parts containers KLT  
**7-14434**



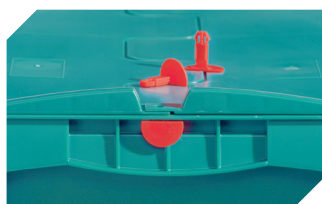
**Labels**  
W 210 x H 74 mm  
**43-14557**



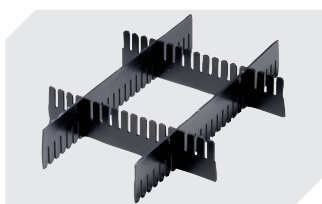
**Transport dolly**  
polypropylene wheels  
L 620 x W 420 mm  
**43-1491**



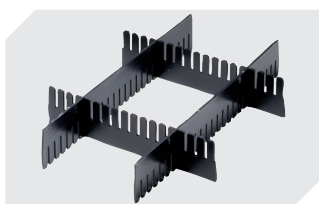
**Slot-in divider strips**  
Material thickness 5 mm  
L 1150 x H 180 mm  
**7-15509**



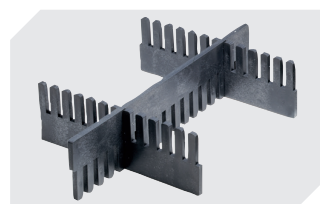
**Security seals**  
for European size stacking containers  
XL and small parts containers KLT  
**9-16271**



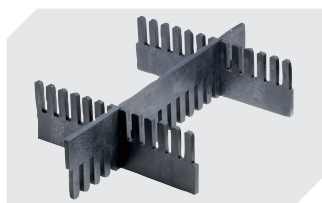
**Slot-in divider strips**  
Material thickness 5 mm  
L 1150 x H 50 mm  
**43-18417**



**Slot-in divider strips**  
Material thickness 5 mm  
L 1150 x H 80 mm  
**43-18418**



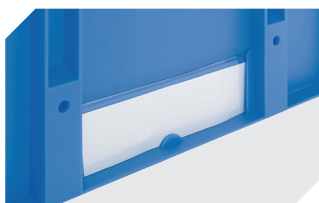
**Slot-in divider strips**  
Material thickness 10 mm  
L 950 x H 55 mm  
**43-18419**



**Slot-in divider strips**  
Material thickness 10 mm  
L 950 x H 120 mm  
**43-18420**



**Covers for palletised containers**  
L 1220 x W 820 mm  
**9-18421**



**Label covers**  
for European size stacking containers  
XL and small parts containers KLT  
W 209 x H 67 mm  
**9-20053**



**Label covers**  
for small parts containers KLT  
firm fit  
W 218 x H 80 mm  
**9-20054**



**Transport dolly**  
rubber wheels  
L 620 x W 420 mm  
**43-21883**



**Document pockets**  
self-adhesive  
3 sides open  
L 175 x W 105 mm  
**6-5031**