

Pos. Dimensions, tolerances as specified in DIN 16901

Pos.	Dimensions, tolerances as specified in DIN 16901	
A	Outside length top	85 mm
B	Outside width top	102 mm
C	Height	50 mm
F	Width of view and pick opening	77 mm
G	Height of view and pick opening	21 mm

Product features	*Load capacity as specified in EN 13117
Weight	0.04 kg
*Load capacity	1 kg
Volume	0.25 litres
Warranty	5 year BITO QUALITY
ESD	ESD version upon request
Temperature range	-20°C to +80°C
Food safety	✓
Material	PP
Stock item	-
Pcs/pallet	3360
Pcs/pack	60
colour	yellow
Ref. no.	2-19580

Other colours / special colours on request

Dimensions	tolerances as specified in DIN 16901
Outside length top	85 mm
Outside width top	102 mm
Height	50 mm
Inside length top	69 mm
Inside width top	90 mm
Inside length base	66 mm
Inside width base	86 mm
Inside height	43 mm
Stacking height	46 mm
Height below handle	10 mm
Pick opening W x H	77 x 21 mm
Label dimensions L x W	68,5 x 12,5 mm

Printed message

Pad printing area on short side (rear)	60 x 20 mm
Pad printing area on long side	50 x 20 mm
Injection mold printing area on long side	30 x 20 mm

Information & Service
www.bito.com

BITO
STORAGE
SYSTEMS

Storage bins SK

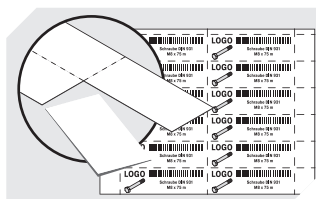
SK1095 | Accessories



Drop-on lids
for storage bins SK
L 71 x W 97/76 mm
2-19545



Label covers
for storage bins SK
L 68.5 x W 12.5 mm
2-19547



Label sheets
W 68.5 x H 12.5 mm
46-20773