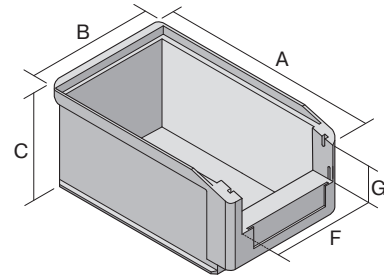


Storage bins SK

SK5032 | Data sheet



Pos. Dimensions, tolerances as specified in DIN 16901

Pos.	Dimensions, tolerances as specified in DIN 16901	
A	Outside length top	500 mm
B	Outside width top	313 mm
C	Height	200 mm
F	Width of view and pick opening	241 mm
G	Height of view and pick opening	84 mm

Product features

Weight	1.48 kg
*Stacking load	180 kg
*Load capacity	35 kg
Volume	24 litres
Warranty	5 year BITO QUALITY
ESD	ESD version upon request
Temperature range	-20°C to +80°C
Food safety	✓
Material	PP
Stock item	-
Pcs/pallet	60
Pcs/pack	6
colour	green
Ref. no.	2-1467

Other colours / special colours on request

All written or verbal information about product properties and product application are given to the best of our knowledge. This information is based on our experience and cannot be warranted as the sole binding product properties. It is the customer's responsibility to check whether the ordered goods are suitable for the intended use. All measurements are subject to variations within the scope of the applicable manufacturing tolerances.

* Load capacity data according to EN 13117 refer to an ambient temperature of 23 °C.

Dimensions, tolerances as specified in DIN 16901

Outside length top	500 mm
Outside width top	313 mm
Height	200 mm
Inside length top	447 mm
Inside width top	281 mm
Inside length base	445 mm
Inside width base	278 mm
Inside height	186 mm
Stacking height	193 mm
Height below handle	55 mm
Pick opening W x H	241 x 84 mm
Label dimensions L x W	117 x 40 mm

Printed message

Pad printing area on short side (front)	130 x 20 mm
Pad printing area on short side (rear)	250 x 100 mm
Pad printing area on long side	250 x 30 mm
Screen printing area on short side (rear)	220 x 90 mm
Hot foil printing area on short side (rear)	250 x 100 mm
Hot foil printing area on long side	250 x 30 mm
Injection mold printing area on long side	285 x 55 mm

Information & Service
www.bito.com

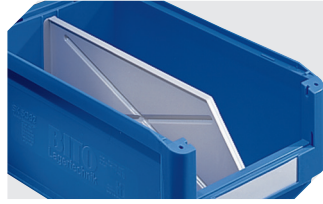
BITO
 STORAGE
 SYSTEMS

Storage bins SK

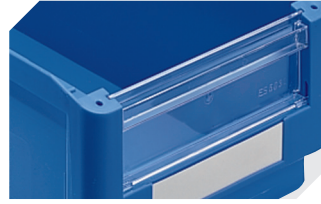
SK5032 | Accessories



Label covers
for storage bins SK
L 178 x W 42 mm
2-1066



Longitudinal dividers
for storage bins SK
2-1075



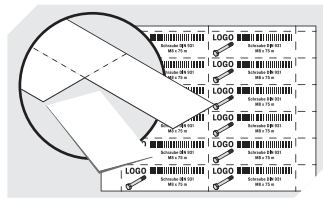
Insertable windows
for storage bins SK
2-1112



Dust covers
for storage bins SK
L 482 x W 299 x H 2.5 mm
2-1136



Handles
for storage bins SK
L 281 mm
2-19527



Label sheets
W 178 x H 40 mm
46-20776