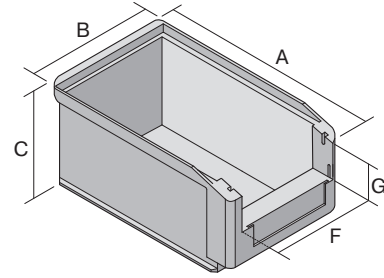
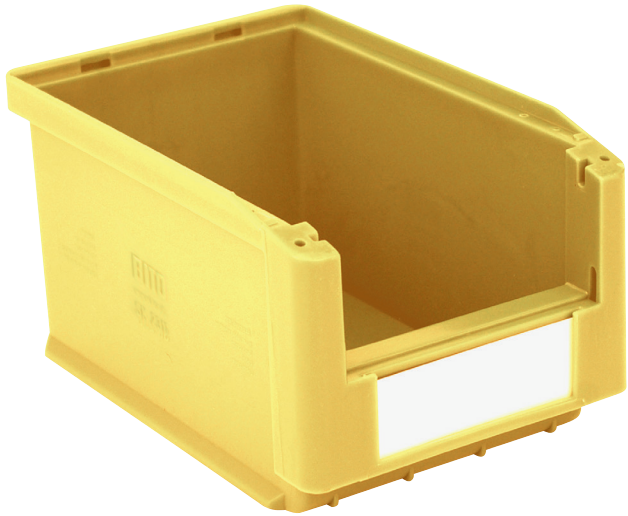


Storage bins SK

SK2311 | Data sheet



Pos. Dimensions, tolerances as specified in DIN 16901

Pos.	Dimensions, tolerances as specified in DIN 16901	
A	Outside length top	230 mm
B	Outside width top	150 mm
C	Height	125 mm
F	Width of view and pick opening	115 mm
G	Height of view and pick opening	54 mm

Product features

Weight	0.29 kg
*Stacking load	35 kg
*Load capacity	5 kg
Volume	3 litres
Warranty	5 year BITO QUALITY
ESD	ESD version upon request
Temperature range	-20°C to +80°C
Food safety	✓
Material	PP
Stock item	-
Pcs/pallet	420
Pcs/pack	20
colour	yellow
Ref. no.	2-1450

Other colours / special colours on request

All written or verbal information about product properties and product application are given to the best of our knowledge. This information is based on our experience and cannot be warranted as the sole binding product properties. It is the customer's responsibility to check whether the ordered goods are suitable for the intended use. All measurements are subject to variations within the scope of the applicable manufacturing tolerances.

* Load capacity data according to EN 13117 refer to an ambient temperature of 23 °C.

Dimensions, tolerances as specified in DIN 16901

Outside length top	230 mm
Outside width top	150 mm
Height	125 mm
Inside length top	199 mm
Inside width top	129 mm
Inside length base	196 mm
Inside width base	127 mm
Inside height	116 mm
Stacking height	118 mm
Height below handle	22 mm
Pick opening W x H	115 x 54 mm
Label dimensions L x W	98 x 36 mm

Printed message

Pad printing area on short side (front)	60 x 20 mm
Pad printing area on short side (rear)	100 x 70 mm
Pad printing area on long side	160 x 20 mm
Screen printing area on short side (rear)	70 x 40 mm
Hot foil printing area on long side	160 x 20 mm
Injection mold printing area on long side	150 x 30 mm

Information & Service
www.bito.com

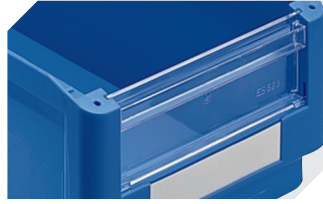
BITO
 STORAGE
 SYSTEMS

Storage bins SK

SK2311 | Accessories



Label covers
for storage bins SK
L 98 x W 39 mm
2-1063



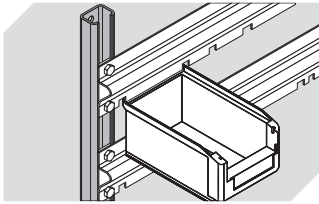
Insertable windows
for storage bins SK
2-1109



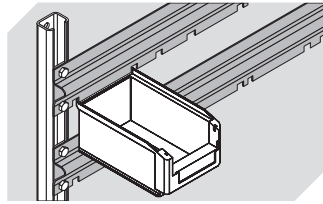
Dust covers
for storage bins SK
L 224 x W 124 x H 2 mm
2-1137



Drop-on lids
for storage bins SK
L 209 x W 144/115 mm
2-30261



Louvred panel uprights
L 1000 x W 35 x H 25 mm
8-5928



Bin suspension rails
L 1126 mm
8-7869