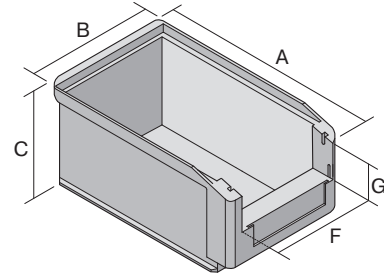


Storage bins SK

SK5033 | Data sheet



Pos. Dimensions, tolerances as specified in DIN 16901

Pos.	Dimensions, tolerances as specified in DIN 16901	
A	Outside length top	500 mm
B	Outside width top	313 mm
C	Height	300 mm
F	Width of view and pick opening	241 mm
G	Height of view and pick opening	133 mm

Product features

Weight	1.96 kg
*Stacking load	150 kg
*Load capacity	35 kg
Volume	36 litres
Warranty	5 year BITO QUALITY
ESD	ESD version upon request
Temperature range	-20°C to +80°C
Food safety	✓
Material	PP
Stock item	-
Pcs/pallet	36
Pcs/pack	4
colour	blue
Ref. no.	2-14896

Other colours / special colours on request

All written or verbal information about product properties and product application are given to the best of our knowledge. This information is based on our experience and cannot be warranted as the sole binding product properties. It is the customer's responsibility to check whether the ordered goods are suitable for the intended use. All measurements are subject to variations within the scope of the applicable manufacturing tolerances.

* Load capacity data according to EN 13117 refer to an ambient temperature of 23 °C.

Dimensions, tolerances as specified in DIN 16901

Outside length top	500 mm
Outside width top	313 mm
Height	300 mm
Inside length top	448 mm
Inside width top	282 mm
Inside length base	445 mm
Inside width base	278 mm
Inside height	286 mm
Stacking height	293 mm
Height below handle	88 mm
Pick opening W x H	241 x 133 mm
Label dimensions L x W	178 x 56 mm

Printed message

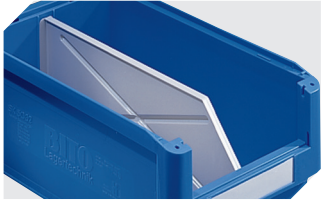
Pad printing area on short side (front)	250 x 50 mm
Pad printing area on short side (rear)	250 x 100 mm
Pad printing area on long side	250 x 100 mm
Screen printing area on short side (rear)	220 x 200 mm
Hot foil printing area on short side (rear)	250 x 100 mm
Hot foil printing area on long side	250 x 100 mm
Injection mold printing area on long side	290 x 55 mm

Information & Service
www.bitto.com

BITO
 STORAGE
 SYSTEMS

Storage bins SK

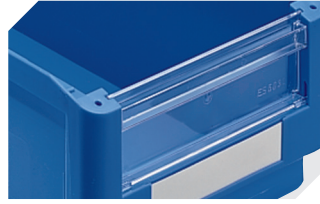
SK5033 | Accessories



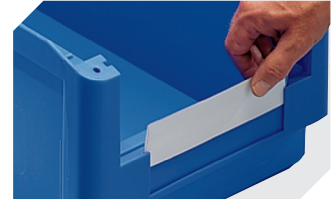
Longitudinal dividers
for storage bins SK
2-1075



Dust covers
for storage bins SK
L 482 x W 299 x H 2.5 mm
2-1136



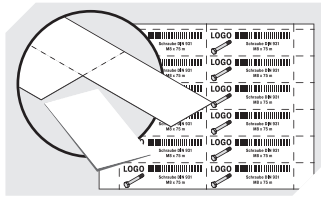
Insertable windows
for storage bins SK
2-14578



Label covers
for storage bins SK
L 178 x W 58 mm
2-14897



Handles
for storage bins SK
L 281 mm
2-19527



Label sheets
W 178 x H 56 mm
46-20777