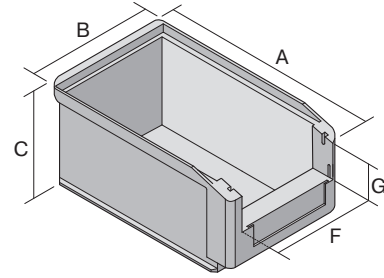
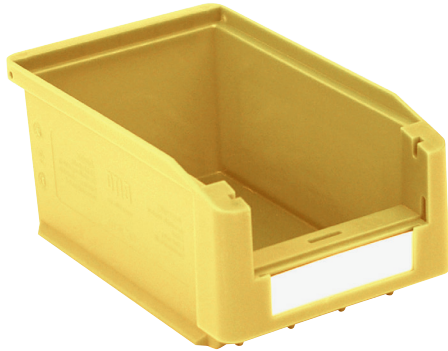


Storage bins SK

SK1610 | Data sheet



Pos. Dimensions, tolerances as specified in DIN 16901

Pos.	Dimensions, tolerances as specified in DIN 16901	
A	Outside length top	160 mm
B	Outside width top	103 mm
C	Height	75 mm
F	Width of view and pick opening	78 mm
G	Height of view and pick opening	31 mm

Product features

Weight	0.09 kg
*Load capacity	2 kg
Volume	0.8 litres
Warranty	5 year BITO QUALITY
ESD	ESD version upon request
Temperature range	-20°C to +80°C
Food safety	✓
Material	PP
Stock item	-
Pcs/pallet	1000
Pcs/pack	40
colour	yellow
Ref. no.	2-1446

Other colours / special colours on request

All written or verbal information about product properties and product application are given to the best of our knowledge. This information is based on our experience and cannot be warranted as the sole binding product properties. It is the customer's responsibility to check whether the ordered goods are suitable for the intended use. All measurements are subject to variations within the scope of the applicable manufacturing tolerances.

* Load capacity data according to EN 13117 refer to an ambient temperature of 23 °C.

Dimensions, tolerances as specified in DIN 16901

Outside length top	160 mm
Outside width top	103 mm
Height	75 mm
Inside length top	139 mm
Inside width top	87 mm
Inside length base	136 mm
Inside width base	85 mm
Inside height	68 mm
Stacking height	68 mm
Height below handle	13 mm
Pick opening W x H	78 x 31 mm
Label dimensions L x W	70 x 20 mm

Printed message

Pad printing area on short side (front)	40 x 10 mm
Pad printing area on short side (rear)	60 x 30 mm
Pad printing area on long side	110 x 40 mm
Injection mold printing area on long side	110 x 25 mm

Information & Service
www.bito.com

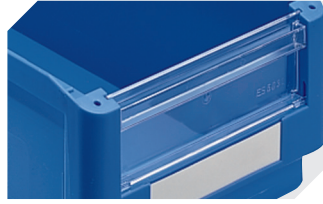
BITO
STORAGE
SYSTEMS

Storage bins SK

SK1610 | Accessories



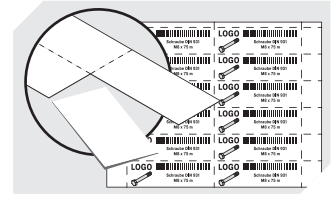
Label covers
for storage bins SK
L 71 x W 21 mm
2-1061



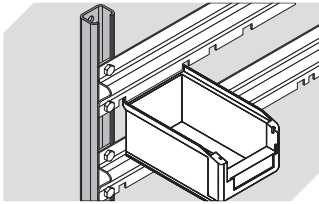
Insertable windows
for storage bins SK
2-1108



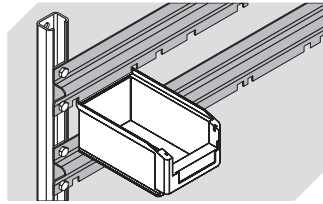
Drop-on lids
for storage bins SK
L 149 x W 98/77 mm
2-19870



Label sheets
W 70.5 x H 20 mm
46-20774



Louvred panel uprights
L 1000 x W 35 x H 25 mm
8-5928



Bin suspension rails
L 1126 mm
8-7869