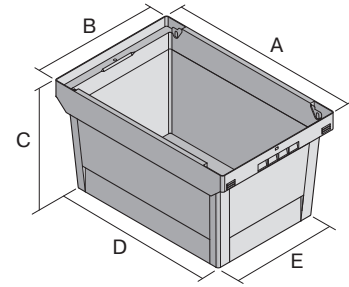


Multi-purpose containers MB with double base

MB64221D | Data sheet



Pos. Dimensions, tolerances as specified in DIN 16901

Pos.	Dimensions, tolerances as specified in DIN 16901	
A	Outside length top	600 mm
B	Outside width top	400 mm
C	Height	242 mm
D	Base length outside	505 mm
E	Base width outside	335 mm

Product features	*Load capacity as specified in EN 13117
Weight	2.72 kg
*Load capacity	75 kg
Volume	38 litres
Warranty	5 year BITO QUALITY
ESD	No
Temperature range	-20°C to +60°C
Food safety	✓
Material	PP
Stock item	✓
Pcs/pallet	136
Pcs/pack	1
colour	bin colour dove blue - double base in dark grey/black
Ref. no.	6-17605

Other colours / special colours on request

Dimensions, tolerances as specified in DIN 16901	
Outside length top	600 mm
Outside width top	400 mm
Height	242 mm
Inside length top	540 mm
Inside width top	371 mm
Inside length base	498 mm
Inside width base	329 mm
Inside height	215 mm
Height of stacking rim	50 mm
Printed message	
Pad printing area on short side (front)	240 x 90 mm
Pad printing area on short side (rear)	240 x 90 mm
Pad printing area on long side	250 x 90 mm
Screen printing area on short side	210 x 50 mm
Screen printing area on short side (rear)	210 x 50 mm
Screen printing area on long side	380 x 60 mm
Hot foil printing area on short side (front)	240 x 90 mm
Hot foil printing area on short side (rear)	240 x 90 mm
Hot foil printing area on long side	250 x 90 mm
Injection mold printing area on long side	235 x 25 mm

Information & Service
www.bitto.com

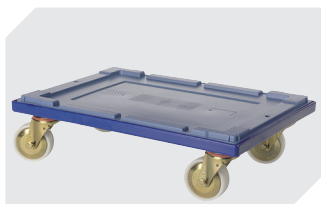
BITO
 STORAGE
 SYSTEMS

Multi-purpose containers MB with double base

MB64221D | Accessories



Drop-on lid
for multi-purpose containers MB
L 600 x W 400 mm
6-30276



Transport dollies
for multi-purpose containers sized
600 x 400 mm
L 620 x W 420 mm
6-15510



Connector clips
6-15625



Document pockets
self-adhesive
2 sides open
L 145 x W 100 mm
46-21108



Document pockets
self-adhesive
3 sides open
L 175 x W 105 mm
6-5031