

# Storage bins SK

## SK5031 | Data sheet



Pos. Dimensions, tolerances as specified in DIN 16901

Pos.	Dimensions, tolerances as specified in DIN 16901	
A	Outside length top	500 mm
B	Outside width top	313 mm
C	Height	145 mm
F	Width of view and pick opening	242 mm
G	Height of view and pick opening	55 mm

Product features	*Load capacity as specified in EN 13117
Weight	1.15 kg
*Stacking load	180 kg
*Load capacity	30 kg
Volume	17 litres
Warranty	5 year BITO QUALITY
ESD	ESD version upon request
Temperature range	-20°C to +80°C
Food safety	✓
Material	PP

Other colours / special colours on request

Dimensions, tolerances as specified in DIN 16901	
Outside length top	500 mm
Outside width top	313 mm
Height	145 mm
Inside length top	447 mm
Inside width top	281 mm
Inside length base	445 mm
Inside width base	278 mm
Inside height	132 mm
Stacking height	138 mm
Height below handle	30 mm
Pick opening W x H	242 x 55 mm
Label dimensions L x W	117 x 40 mm

Printed message	
Pad printing area on short side (front)	130 x 20 mm
Pad printing area on short side (rear)	250 x 80 mm
Pad printing area on long side	250 x 30 mm
Screen printing area on short side (rear)	220 x 50 mm
Hot foil printing area on short side (rear)	250 x 80 mm
Hot foil printing area on long side	250 x 30 mm
Injection mold printing area on long side	285 x 40 mm

Information & Service  
[www.bito.com](http://www.bito.com)

**BITO**  
 STORAGE  
 SYSTEMS

# Storage bins SK

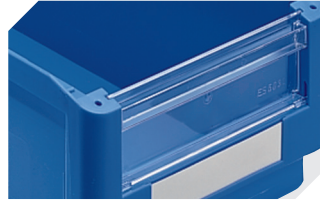
## SK5031 | Accessories



**Label covers**  
for storage bins SK  
L 178 x W 42 mm  
**2-1066**



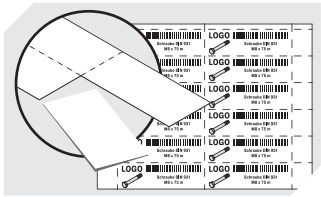
**Dust covers**  
for storage bins SK  
L 482 x W 299 x H 2.5 mm  
**2-1136**



**Insertable windows**  
for storage bins SK  
**2-11969**



**Handles**  
for storage bins SK  
L 281 mm  
**2-19527**



**Label sheets**  
W 178 x H 40 mm  
**46-20776**