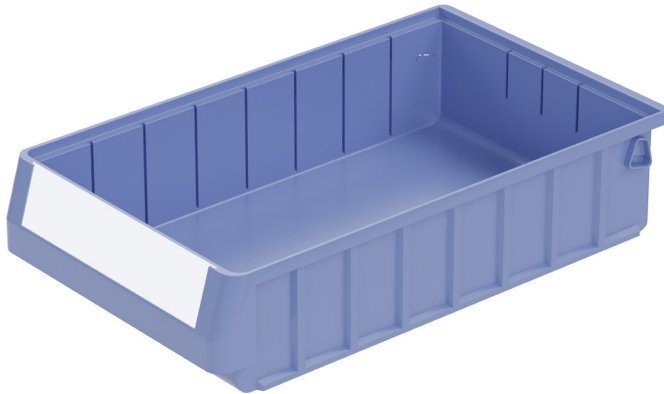


# Storage and handling bins RK RK4209 | Data sheet



Pos. Dimensions, tolerances as specified in DIN 16901

Pos.	Dimensions, tolerances as specified in DIN 16901	
A	Outside length top	400 mm
B	Outside width top	234 mm
C	Height	90 mm

## Product features

Weight	0.53 kg
*Stacking load	20 kg
*Load capacity	6 kg
Volume	6.0 litres
Warranty	5 year BITO QUALITY
ESD	ESD version upon request
Temperature range	-20°C to +80°C
Food safety	-
Material	recycled polypropylene
Stock item	✓
Pcs/pack	8
colour	dove blue
Ref. no.	3-1437

Other colours / special colours on request

All written or verbal information about product properties and product application are given to the best of our knowledge. This information is based on our experience and cannot be warranted as the sole binding product properties. It is the customer's responsibility to check whether the ordered goods are suitable for the intended use. All measurements are subject to variations within the scope of the applicable manufacturing tolerances.

\* Load capacity data according to EN 13117 refer to an ambient temperature of 23 °C.

## Dimensions, tolerances as specified in DIN 16901

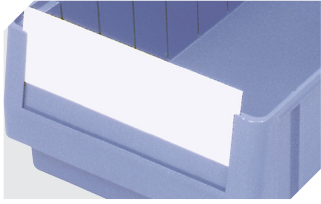
Outside length top	400 mm
Outside width top	234 mm
Height	90 mm
Inside length top	356 mm
Inside width top	211 mm
Inside length base	354 mm
Inside width base	208 mm
Inside height	80 mm
Dimensions W x H x D	mm

Information & Service  
[www.bitto.com](http://www.bitto.com)

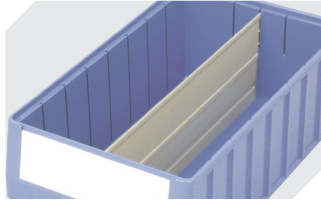
**BITO**  
STORAGE  
SYSTEMS

# Storage and handling bins RK

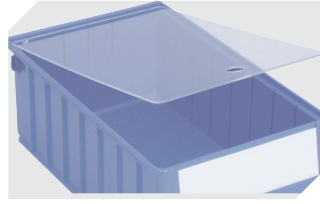
## RK4209 | Accessories



**Label covers**  
for storage and handling bins RK  
L 192 x W 40 mm  
**3-1067**



**Longitudinal dividers**  
for storage and handling bins RK  
**3-1077**



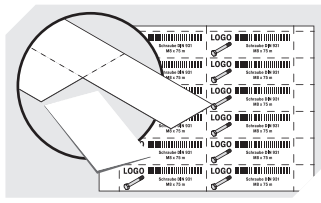
**Dust covers**  
for storage and handling bins RK  
L 363 x W 223 mm  
**3-1129**



**Carry/safety handle**  
for storage and handling bins RK  
**3-1515**



**Cross dividers**  
for storage and handling bins RK  
**3-1590**



**Label sheets**  
W 192 x H 39 mm  
**46-20771**