

**BITO PharmaBox MB43 + MB64 with Inlay High Performance Cooling Packs**  
**Temperature Data**

Cooling Packs for **Temperature range +25°C**  
= Fluid in Cooling Blocks **Green**



Cooling Packs for **Temperature range +08°C**  
= Fluid in Cooling Blocks **Blue**



Cooling Packs for **Temperature range -25°C**  
= Fluid in Cooling Blocks **White/colourless**





## Summary Table „Blue“

### BITO PharmaBox MB43 and MB64 with Inlay High Performance Temperatur Data for Temperature Range +02 to +08°C (Cooling Packs Blue)

MB Size	Volume	Number of blocks	Cooling units	Temperature range	Run time
400 x 300 mm	4 Litre	4	(1 x PCM* Set)	+2 to +8 °C	43h (ISTA 7E)
600 x 400 mm	15 Litre	8	(2 x PCM* Set)	+2 to +8 °C	37h (ISTA 7E)
600 x 400 mm	15 Litre	12	(3 x PCM* Set)	+2 to +8 °C	48h (ISTA 7E)
600 x 400 mm	15 Litre	16	(4 x PCM* Set)	+2 to +8 °C	80h (ISTA 7E)
MB Size	Volume	Number of blocks	Cooling units	Temperature range	Run time
400 x 300 mm	4 Litre	4	(1 x PCM* Set)	+2 to +8 °C	48h (NF S 99-700)
600 x 400 mm	15 Litre	8	(2 x PCM* Set)	+2 to +8 °C	48h (NF S 99-700)
600 x 400 mm	15 Litre	12	(3 x PCM* Set)	+2 to +8 °C	48h (NF S 99-700)

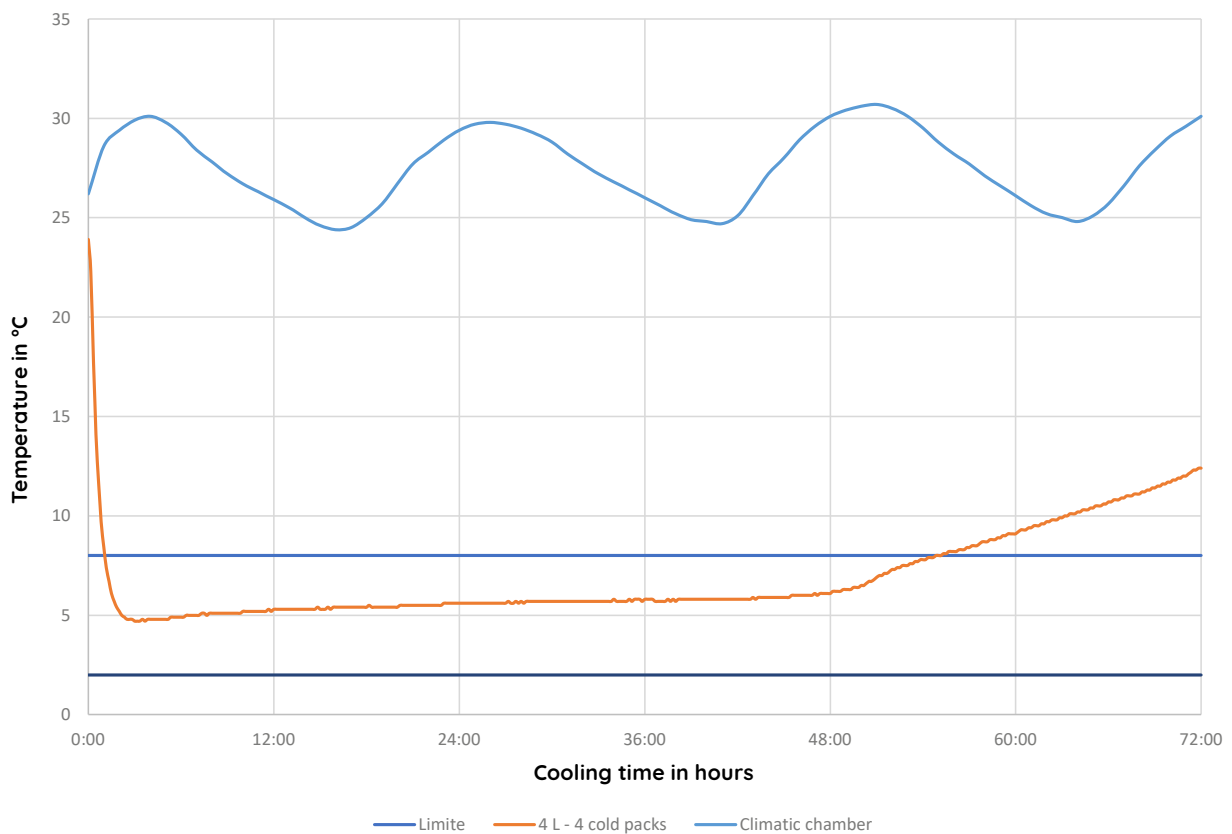
\* Phasenwechselmaterialien - engl.: Phase Change Material, PCM - sind Stoffe, die Wärme aufnehmen oder abgeben, wenn sie eine Änderung ihres physikalischen Zustands durchlaufen, d. h. von fest zu flüssig and umgekehrt. Es findet eine zeitlich begrenzte Einlagerung von Wärme oder von Kälte statt.

MB Size	Volume	Number of blocks	Cooling units High-Performance	Temperature range	Run time
400 x 300 mm	4 Litre	4	1 x PCM* Set (1 Set = 4 Cooling packs)	+2 to +8 °C	56h (ISTA 7E)

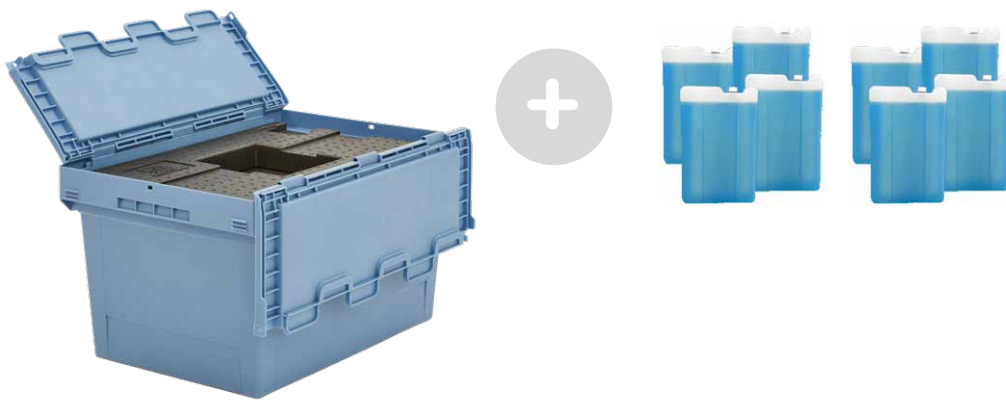


### Temperature profile: ISTA 7E - 72h Summer ☀️

Inlay: High Performance **4 Litre** (BITO MB-Box 400mm x 300mm) + **1 PCM Set**: +02°C to +08°C

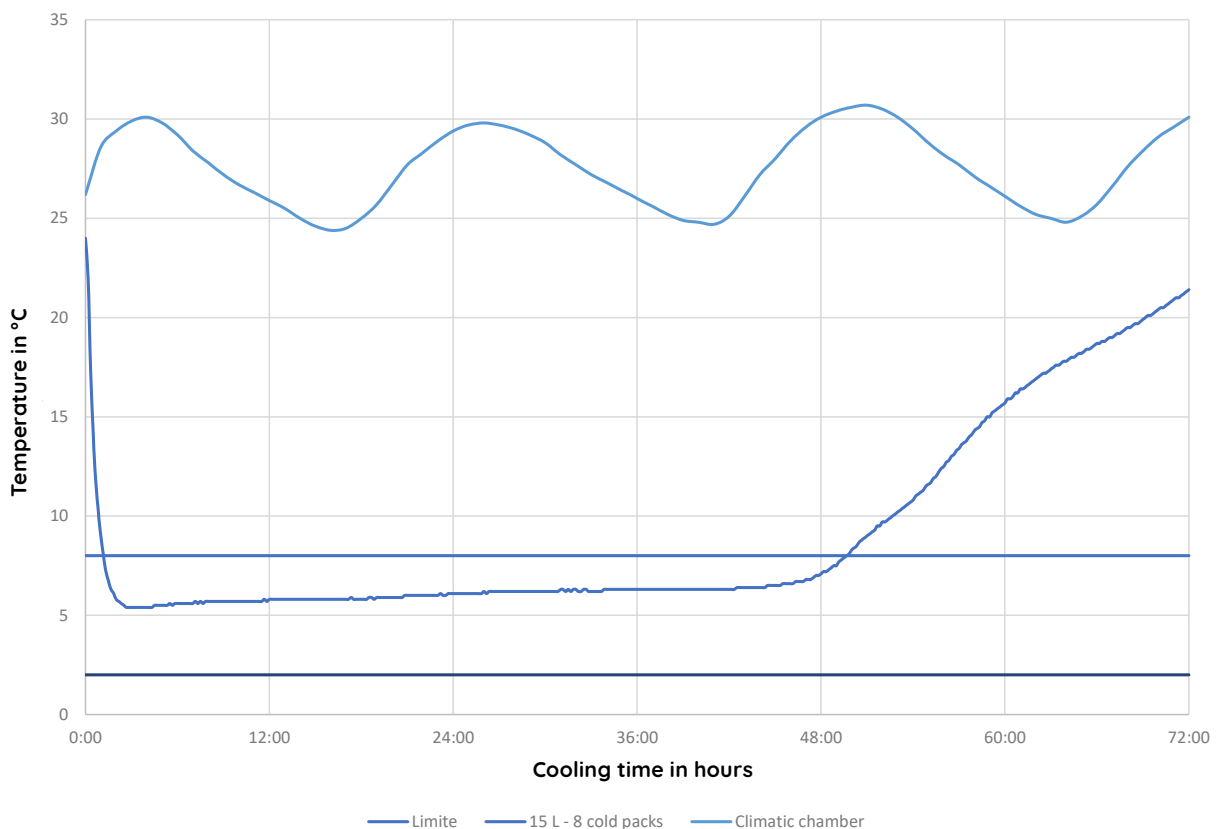


MB Size	Volume	Number of blocks	Cooling units High-Performance	Temperature range	Run time
600 x 400 mm	15 Litre	8	2 x PCM* Sets (1 Set = 4 Cooling packs)	+2 to +8 °C	50h (ISTA 7E)



**Temperature profile: ISTA 7E - 72h Summer** ☀️

Inlay: High Performance **15 Litre** (BITO MB-Box 600mm x 400mm) + **2 PCM Sets**: +02°C to +08°C

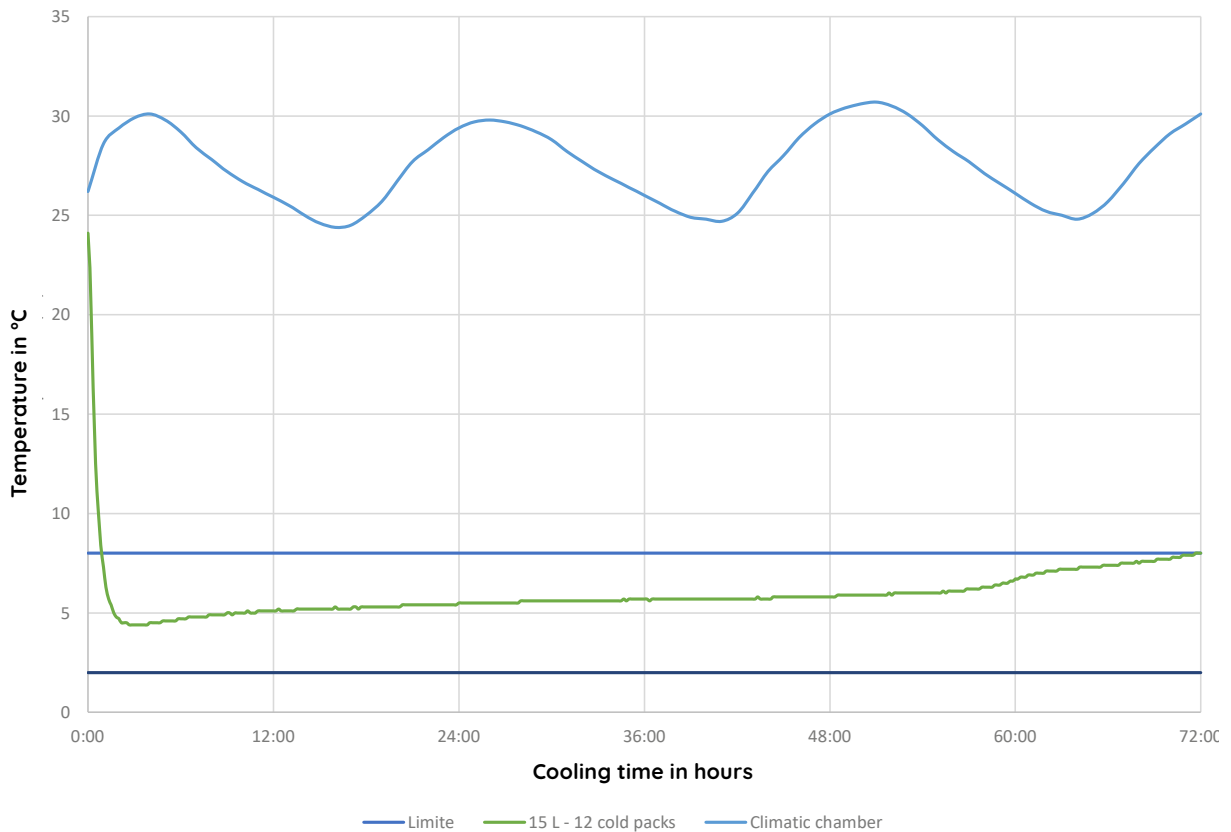


MB Size	Volume	Number of Blocks	Cooling units High-Performance	Temperature range	Run time
600 x 400 mm	15 Litre	12	3 x PCM* Sets (1 Set = 4 Cooling packs)	+2 to +8 °C	72h (ISTA 7E)



### Temperature profile: ISTA 7E - 72h Summer ☀

Inlay: High Performance **15 Litre** (BITO MB-Box 600mm x 400mm) + **3 PCM Sets**: +02°C to +08°C

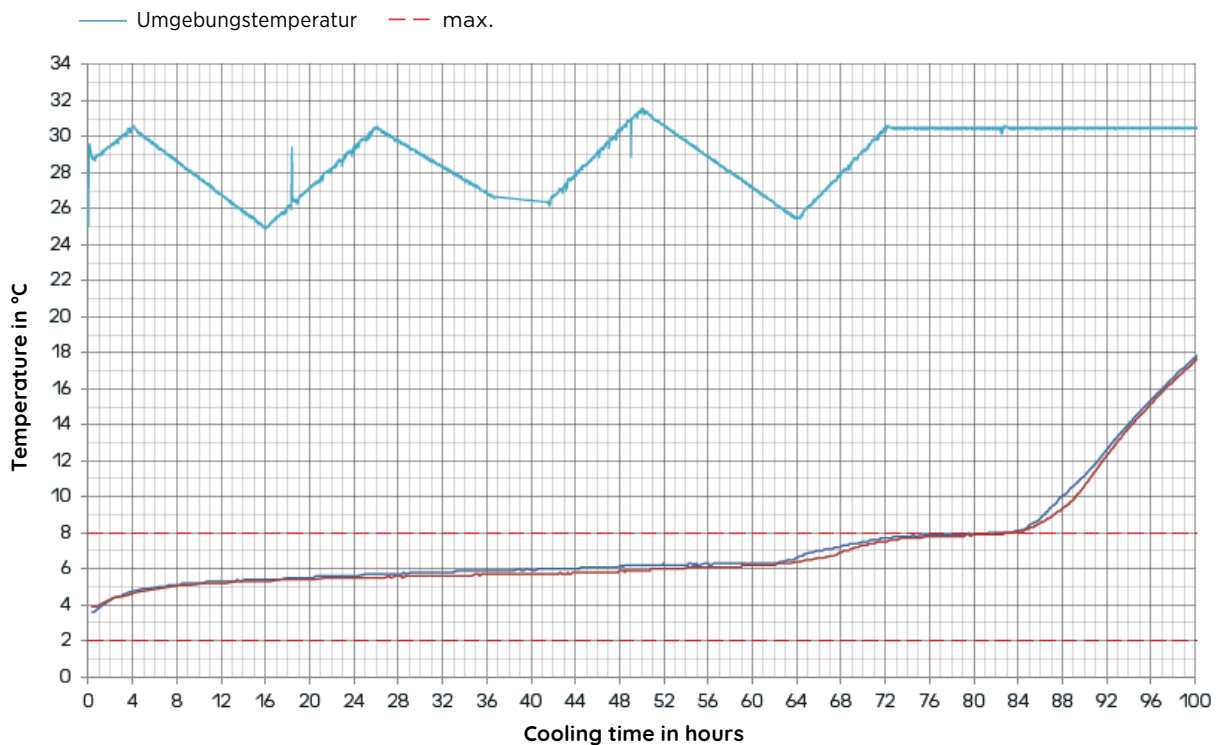


MB Size	Volume	Number of blocks	Cooling units High-Performance	Temperature range	Run time
600 x 400 mm	15 Litre	16	4 x PCM* Sets (1 Set = 4 Cooling packs)	+2 to +8 °C	80h (ISTA 7E)



### Temperature profile: ISTA 7E - 72h Summer ☀️

Inlay: High Performance **15 Litre** (BITO MB-Box 600mm x 400mm) + **4 PCM Sets**: +02°C to +08°C

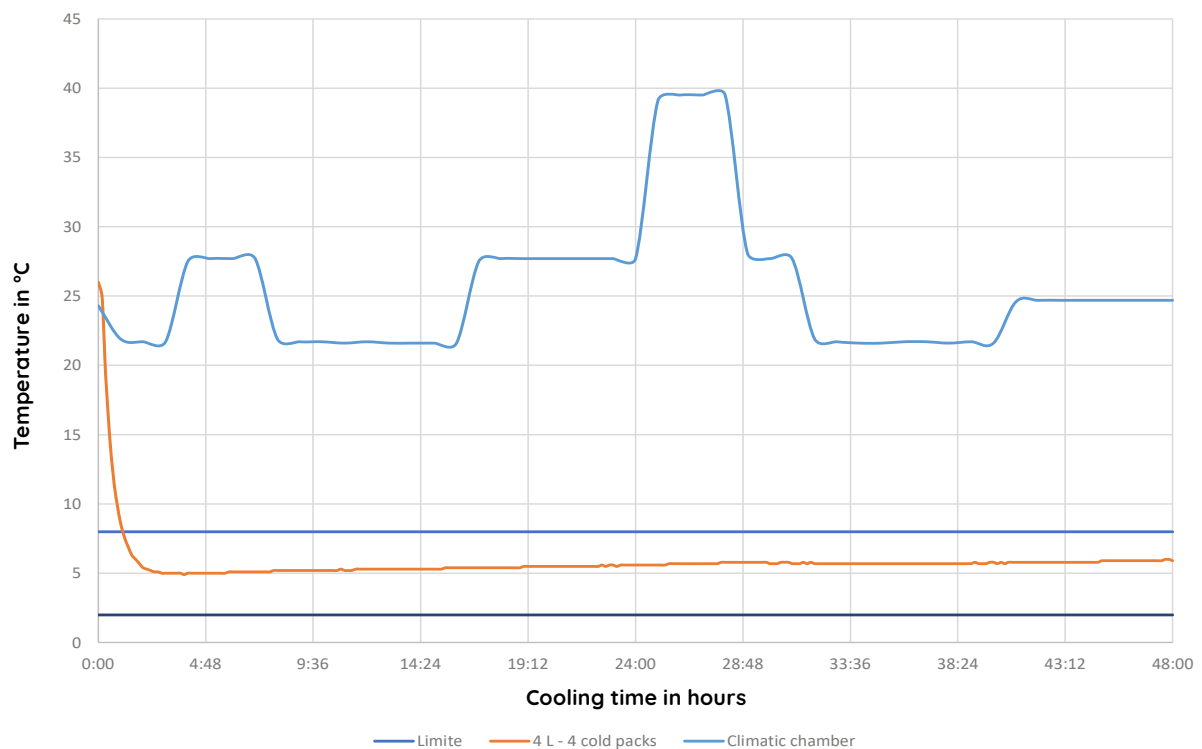


MB Size	Volume	Number of blocks	Cooling units High-Performance	Temperature range	Run time
400 x 300 mm	4 Litre	4	1 x PCM* Set (1 Set = 4 Cooling packs)	+2 to +8 °C	48h (NF S 99-700)

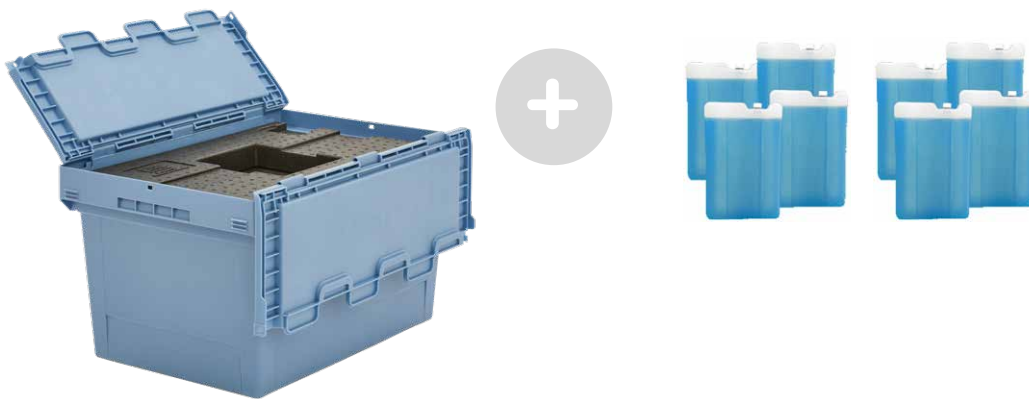


**Temperature profile: NF S 99-700 - 48h Summer** ☀️

Inlay: High Performance **4 Litre** (BITO MB-Box 400mm x 300mm) + **1 PCM Set**: +2°C to +8°C

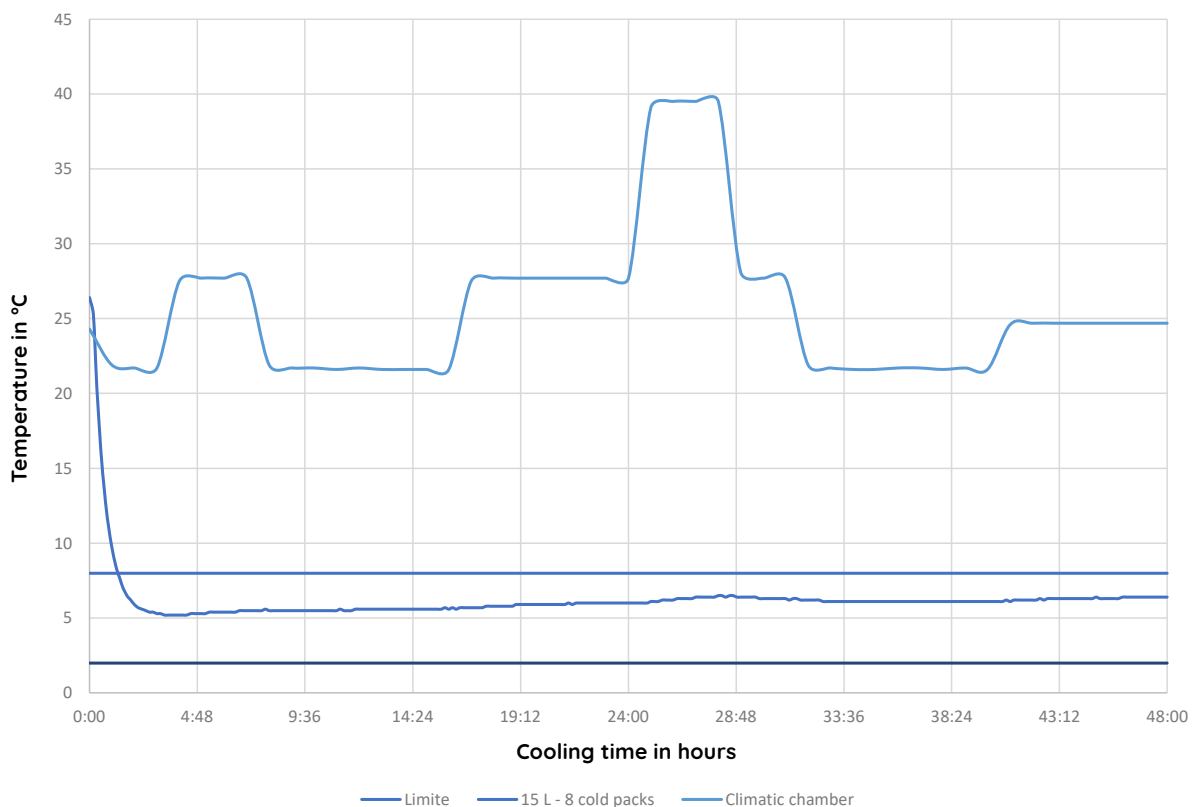


MB Size	Volume	Number of blocks	Cooling units High-Performance	Temperature range	Run time
600 x 400 mm	15 Litre	8	2 x PCM* Sets (1 Set = 4 Cooling packs)	+2 to +8 °C	48h (NF S 99-700)



### Temperature profile: NF S 99-700 - 48h Summer ☀️

Inlay: High Performance **15 Litre** (BITO MB-Box 400mm x 300mm) + **2 PCM Sets**: +2°C to +8°C

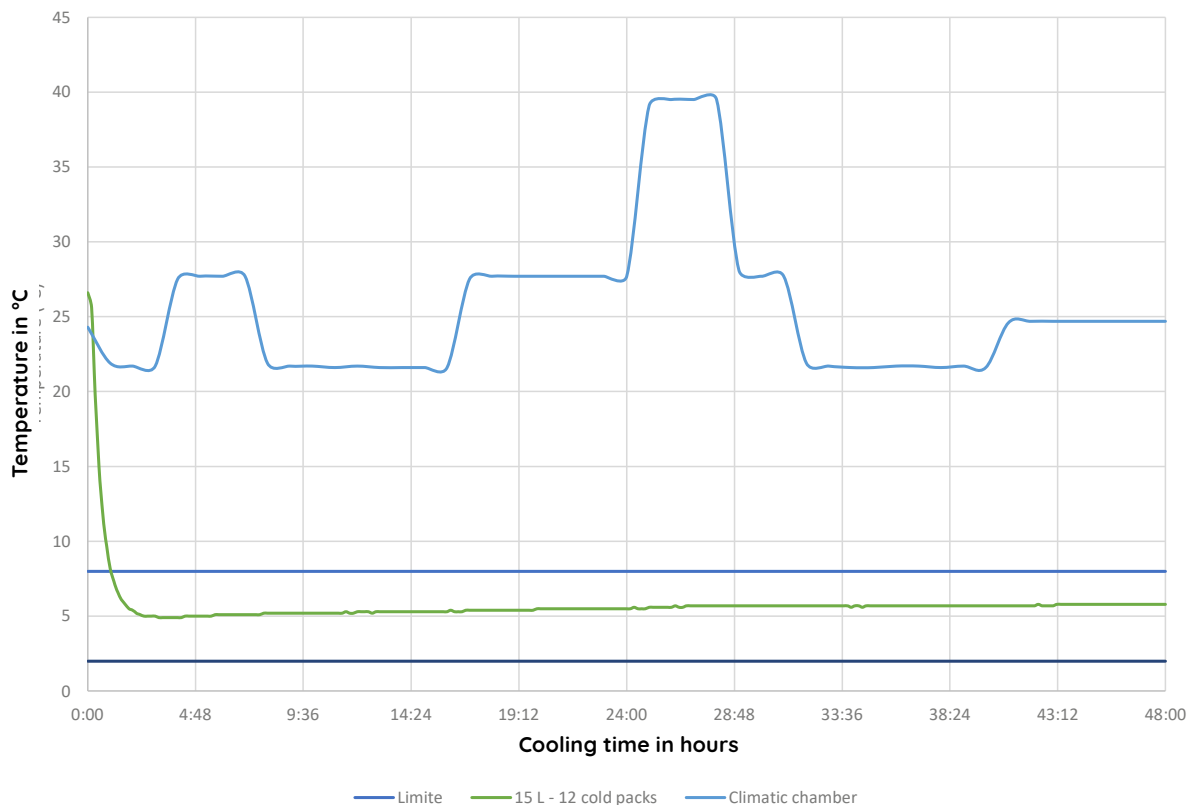


MB Size	Volume	Number of blocks	Cooling units High-Performance	Temperature range	Run time
600 x 400 mm	15 Litre	12	3 x PCM* Sets (1 Set = 4 Cooling packs)	+2 to +8 °C	48h (NF S 99-700)

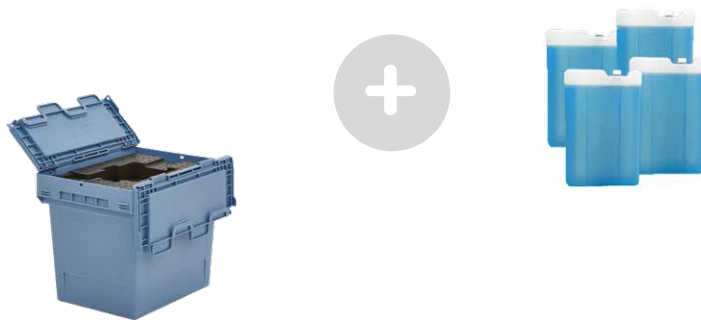


### Temperature profile: NF S 99-700 - 48h Summer ☀

Inlay: High Performance **15 Litre** (BITO MB-Box 400mm x 300mm) + **3 PCM Sets**: +2°C to +8°C

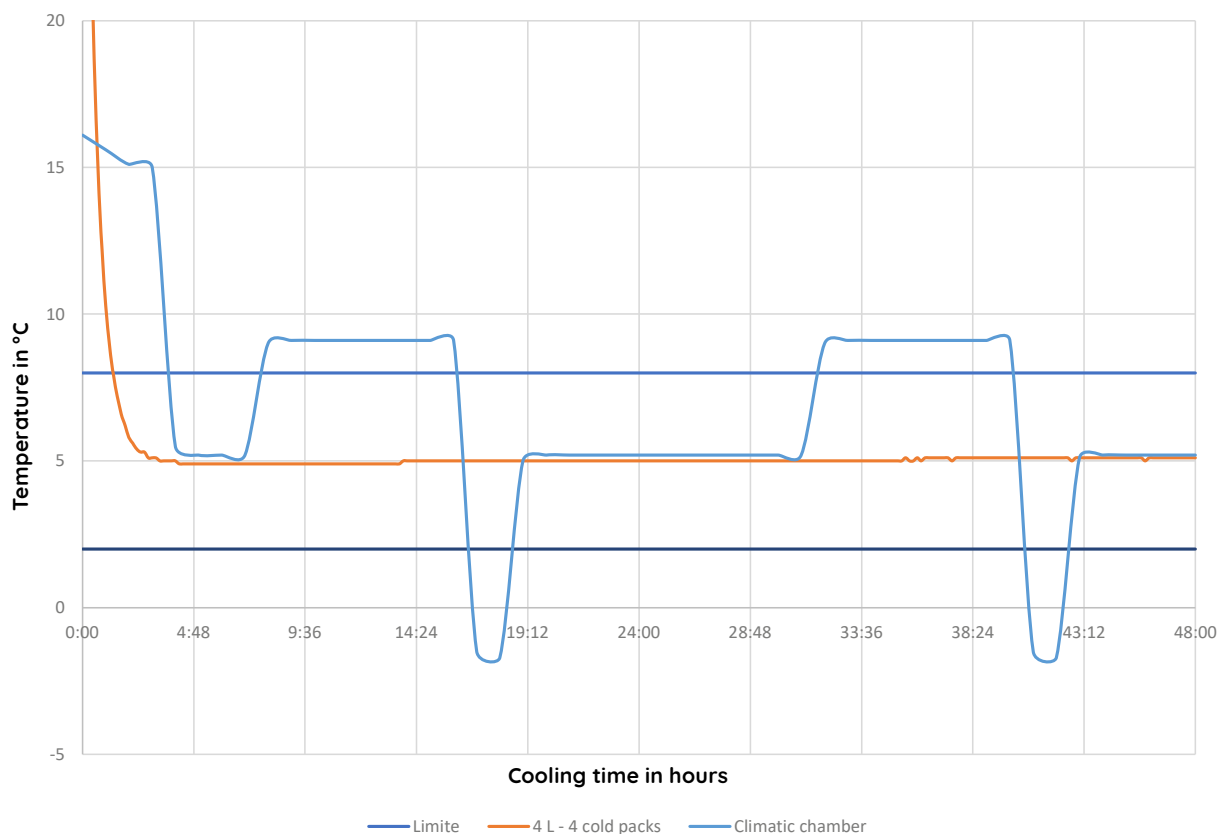


MB Size	Volume	Number of blocks	Cooling units High-Performance	Temperature range	Run time
400 x 300 mm	4 Litre	4	1 x PCM* Set (1 Set = 4 Cooling packs)	+2 to +8 °C	48h (NF S 99-700)

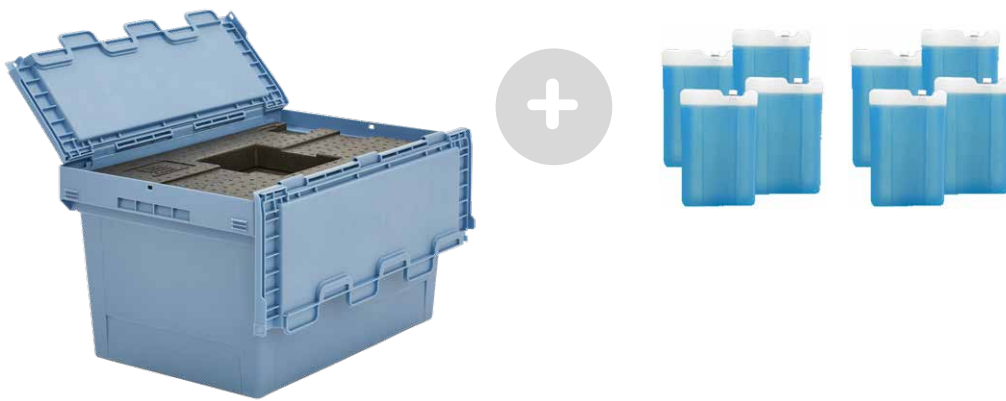


**Temperature profile: NF S 99-700 - 48h Winter** ❄️

Inlay: High Performance **4 Litre** (BITO MB-Box 400mm x 300mm) + **3 PCM Sets: +2°C to +8°C**



MB Size	Volume	Number of blocks	Cooling units High-Performance	Temperature range	Run time
600 x 400 mm	15 Litre	8	2 x PCM* Sets (1 Set = 4 Cooling packs)	+2 to +8 °C	48h (NF S 99-700)



### Temperature profile: NF S 99-700 - 48h Winter ❄️

Inlay: High Performance **15 Litre** (BITO MB-Box 600mm x 400mm) + **2 PCM Sets** (2x4 Blocks): +2°C to +8°C



MB Size	Volume	Number of blocks	Cooling units High-Performance	Temperature range	Run time
600 x 400 mm	15 Litre	12	3 x PCM* Sets (1 Set = 4 Cooling packs)	+2 to +8 °C	48h (NF S 99-700)



### Temperature profile: NF S 99-700 - 48h Winter ❄️

Inlay: High Performance **15 Litre** (BITO MB-Box 600mm x 400mm) + **3 PCM Sets** (3x4 Blocks): +2°C to +8°C





## Summary Table „Green“

### BITO PharmaBox MB43 and MB64 with Inlay High Performance TemperaturData for Temperature range +15°C to +25°C (Cooling packs Green)

MB Size	Volume	Number of blocks	Cooling units	Temperature range	Run time
400 x 300 mm	4 Litre	4	(1 x PCM* Set)	+15 to +25 °C	112h (ISTA 7E)
600 x 400 mm	15 Litre	4	(1 x PCM* Set)	+15 to +25 °C	45h (ISTA 7E)
600 x 400 mm	15 Litre	12	(3 x PCM* Set)	+15 to +25 °C	136h (ISTA 7E)

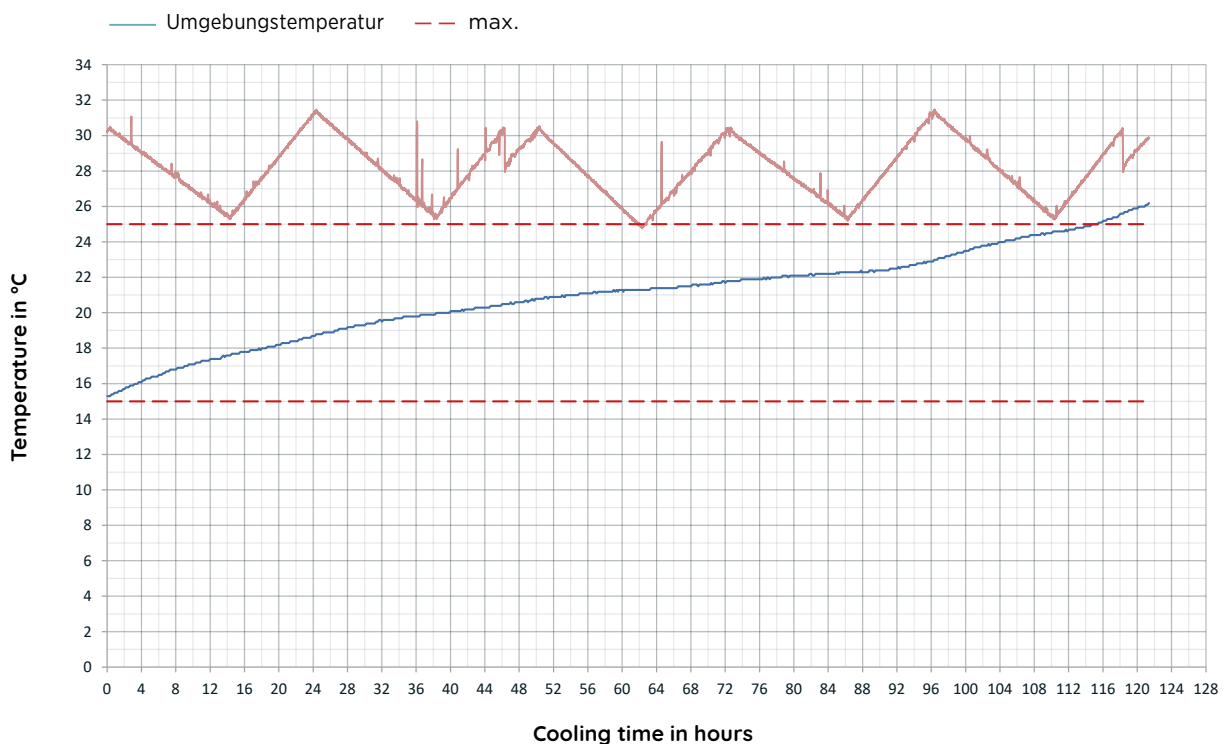
\* Phasenwechselmaterialien – engl.: Phase Change Material, PCM – sind Stoffe, die Wärme aufnehmen oder abgeben, wenn sie eine Änderung ihres physikalischen Zustands durchlaufen, d. h. von fest zu flüssig and umgekehrt. Es findet eine zeitlich begrenzte Einlagerung von Wärme oder von Kälte statt.

MB Size	Volume	Number of blocks	Cooling units	Temperature range	Run time
400 x 300 mm	4 Litre	4	(1 x PCM* Set)	+15 to +25 °C	112h (ISTA 7E)



**Temperature profile: ISTA 7E - 72h Summer** ☀️

Inlay: High Performance **4 Litre** (BITO MB-Box 400mm x 300mm) + **1 PCM Set**: +15°C to +25°C

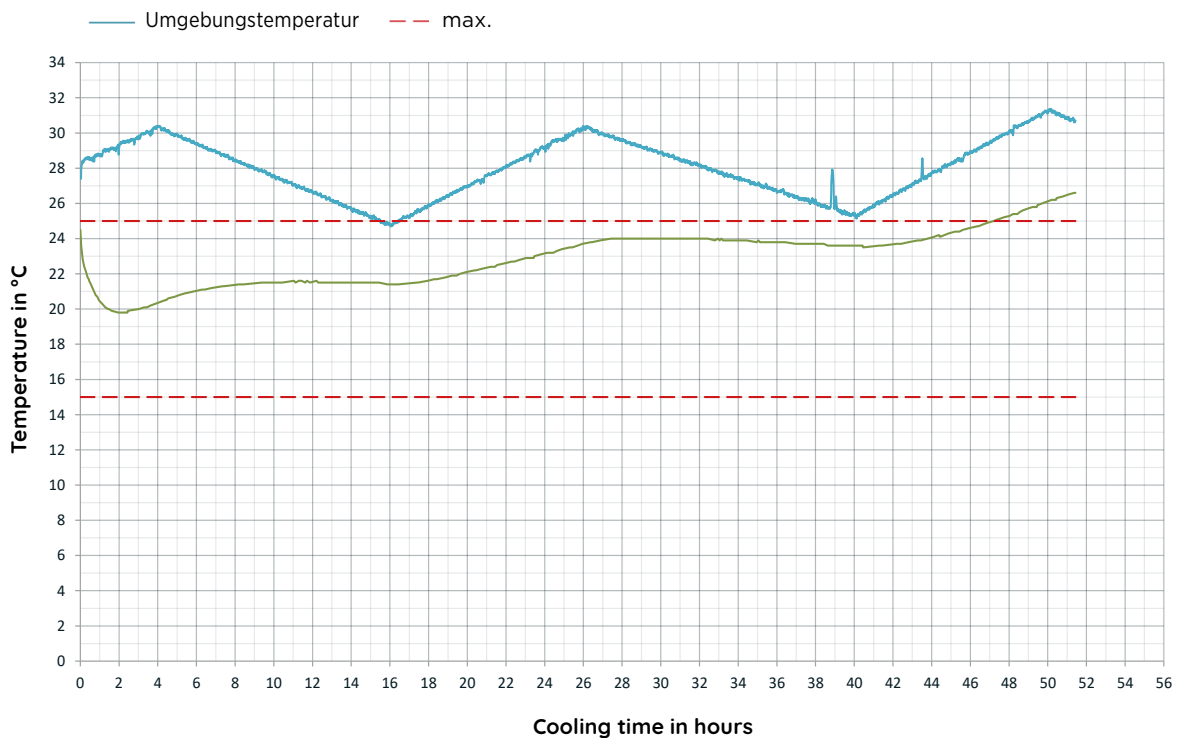


MB Size	Volume	Number of blocks	Cooling units	Temperature range	Run time
600 x 400 mm	15 Litre	4	(1 x PCM* Set)	+15 to +25 °C	45h (ISTA 7E)

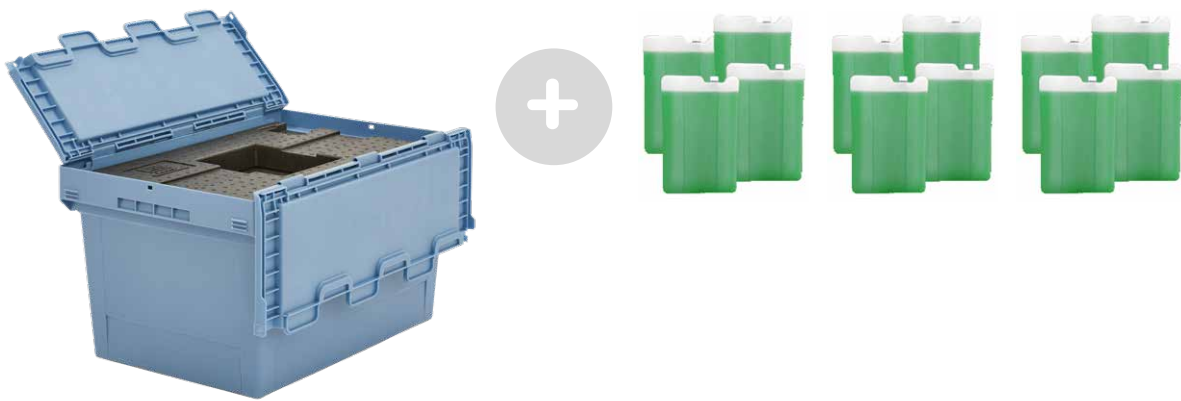


### Temperature profile: ISTA 7E - 72h Summer ☀️

Inlay: High Performance **15 Litre** (BITO MB-Box 600mm x 400mm) + **2 PCM Sets**: +15°C to +25°C

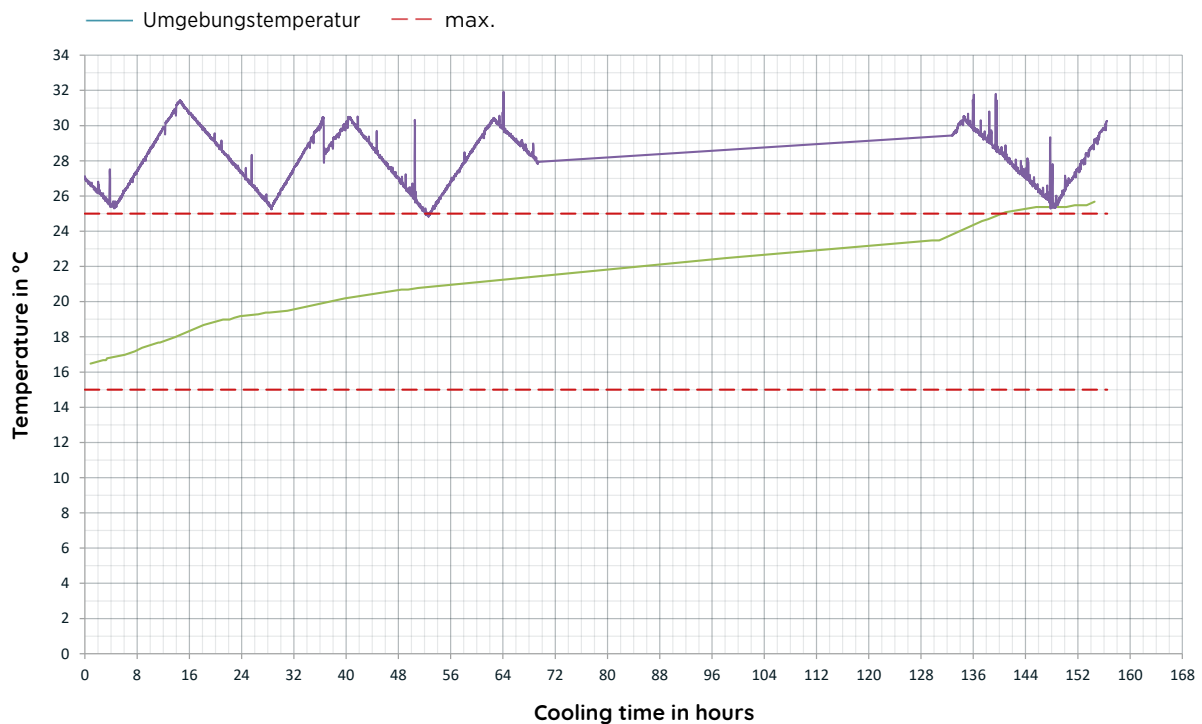


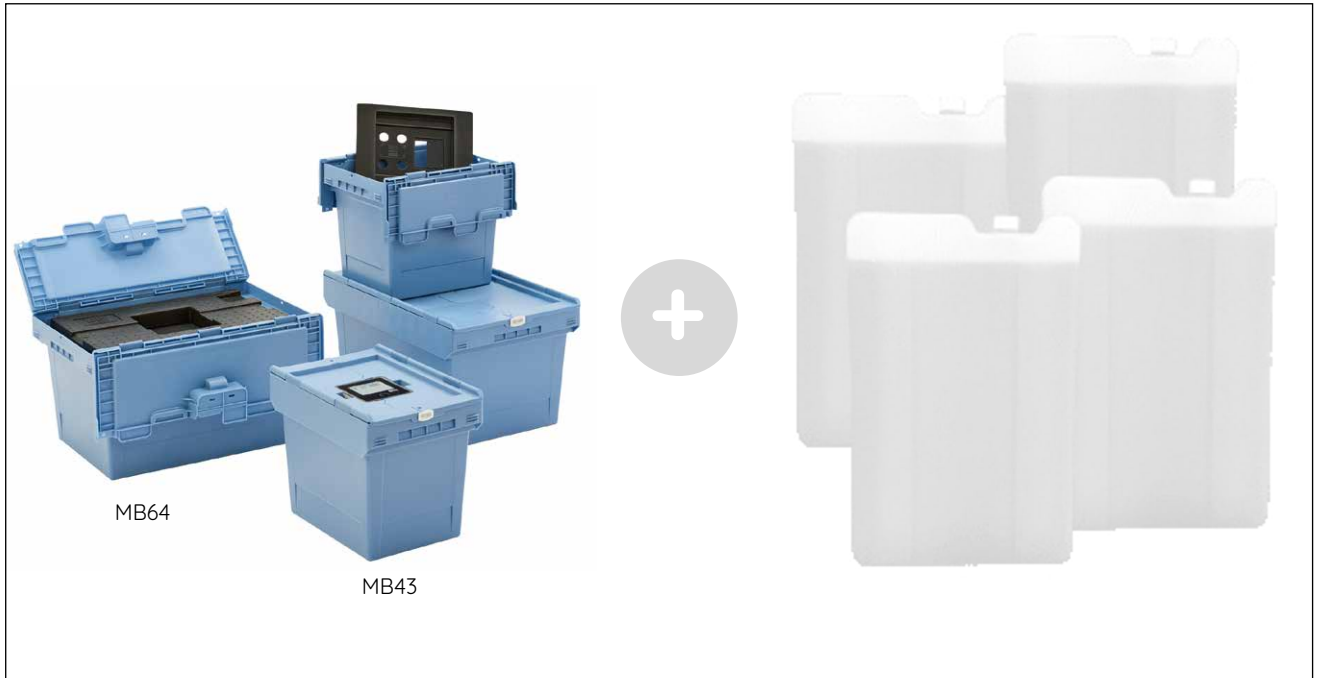
MB Size	Volume	Number of	Cooling units	Temperature range	Run time
600 x 400 mm	15 Litre	12	(3 x PCM* Set)	+15 to +25 °C	136h (ISTA 7E)



### Temperature profile: ISTA 7E - 72h Summer ☀️

Inlay: High Performance **15 Litre** (BITO MB-Box 600mm x 400mm) + **3 PCM Sets**: +15°C to +25°C





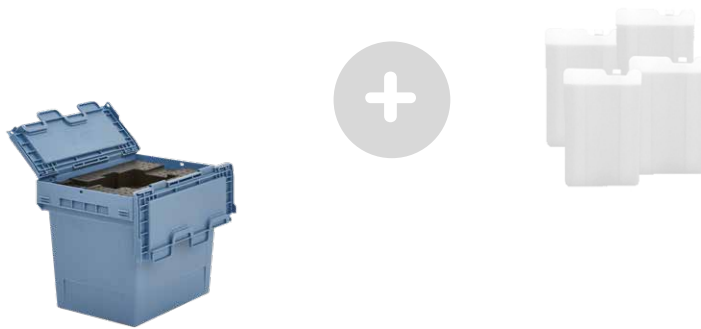
## Summary Table „White“

### BITO PharmaBox MB43 and MB64 with Inlay High Performance TemperaturData for Temperature range -25°C (Cooling packs White)

MB Size	Volume	Number of	Cooling units	Temperature range	Run time
400 x 300 mm	4 Litre	4	(1 x PCM* Set)	-15 to -25 °C	17h (ISTA 7E)
600 x 400 mm	15 Litre	12	(3 x PCM* Set)	-15 to -25 °C	27h (ISTA 7E)

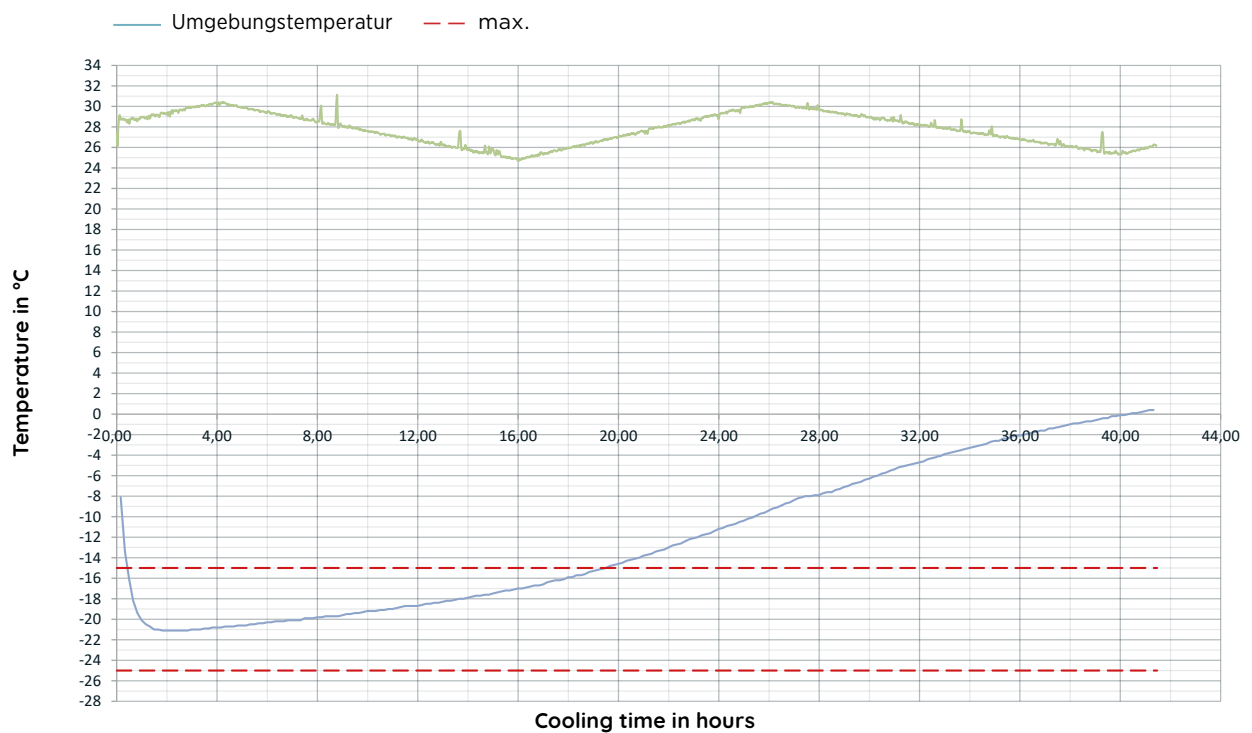
\* Phasenwechselmaterialien – engl.: Phase Change Material, PCM – sind Stoffe, die Wärme aufnehmen oder abgeben, wenn sie eine Änderung ihres physikalischen Zustands durchlaufen, d. h. von fest zu flüssig and umgekehrt. Es findet eine zeitlich begrenzte Einlagerung von Wärme oder von Kälte statt.

MB Size	Volume	Number of blocks	Cooling units	Temperature range	Run time
400 x 300 mm	4 Litre	4	1 x PCM* Set	-15 to -25 °C	27h (ISTA 7E)

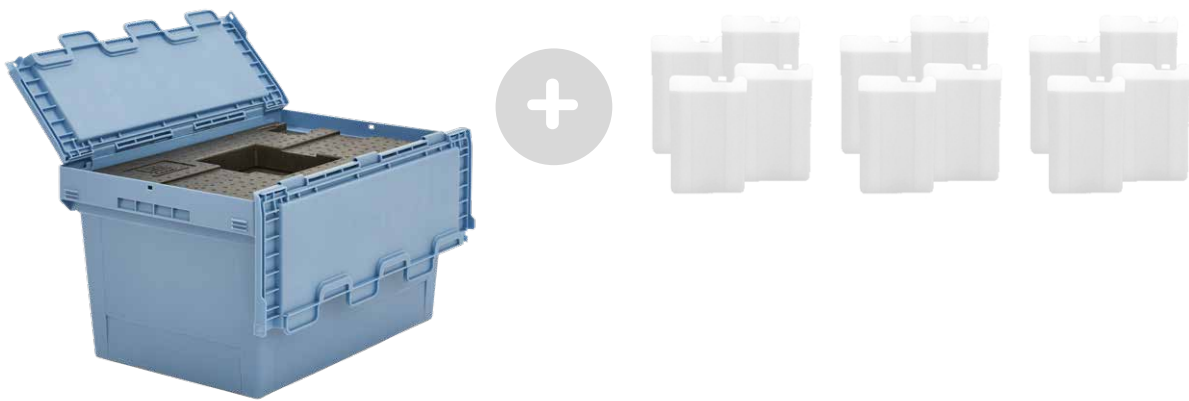


**Temperature profile: ISTA 7E - 72h Summer** ☀️

Inlay: High Performance **4 Litre** (BITO MB-Box 400mm x 300mm) + **1 PCM Set**: -15°C to -25°C



MB Size	Volume	Number of blocks	Cooling units	Temperature range	Run time
600 x 400 mm	15 Litre	12	(3 x PCM* Set)	-15 to -25 °C	27h (ISTA 7E)



**Temperature profile: ISTA 7E - 72h Summer** ☀️

Inlay: High Performance **15 Litre** (BITO MB-Box 600mm x 400mm) + **3 Sets**: +15°C to +25°C

