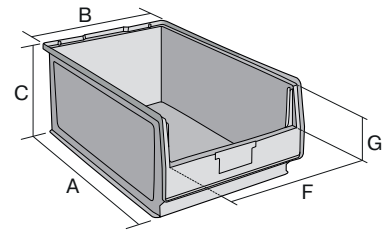
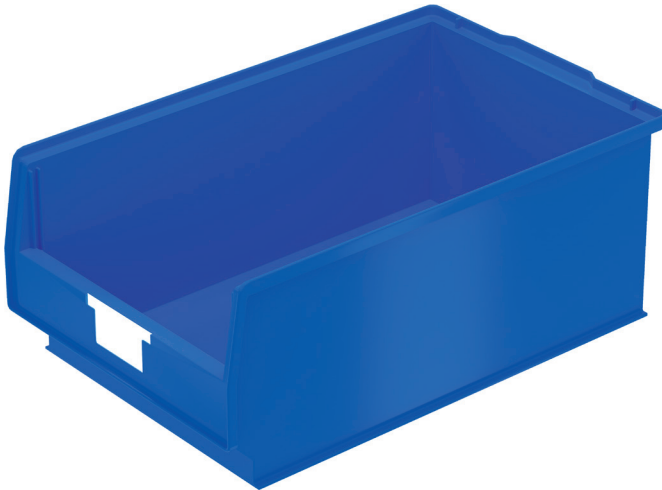


Storage bins PK

PK2 | Data sheet



Pos. Dimensions, tolerances as specified in DIN 16901

Pos.	Dimensions, tolerances as specified in DIN 16901	
A	Outside length top	500 mm
B	Outside width top	310 mm
C	Height	200 mm

Product features

Weight	1.13 kg
Volume	24 litres
ESD	No
Food safety	-
Material	PP
Stock item	✓
Pcs/pack	6
colour	blue
Ref. no.	2-1412

Other colours / special colours on request

All written or verbal information about product properties and product application are given to the best of our knowledge. This information is based on our experience and cannot be warranted as the sole binding product properties. It is the customer's responsibility to check whether the ordered goods are suitable for the intended use. All measurements are subject to variations within the scope of the applicable manufacturing tolerances.

* Load capacity data according to EN 13117 refer to an ambient temperature of 23 °C.

Dimensions, tolerances as specified in DIN 16901

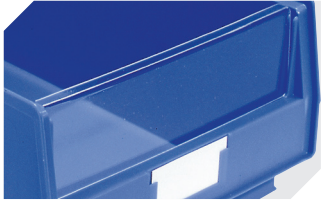
Outside length top	500 mm
Outside width top	310 mm
Height	200 mm
Inside length top	442 mm
Inside width top	282 mm
Inside height	187 mm

Information & Service
www.bitto.com

BITO
 STORAGE
 SYSTEMS

Storage bins PK

PK2 | Accessories



Insertable windows
for storage bins PK
L 277,5 x W 14,5 x H 81 mm
2-1114



Dust covers
for storage bins PK
L 450 x W 300 x H 2 mm
2-1124



Handles
for storage bins PK
L 278 mm
2-15849